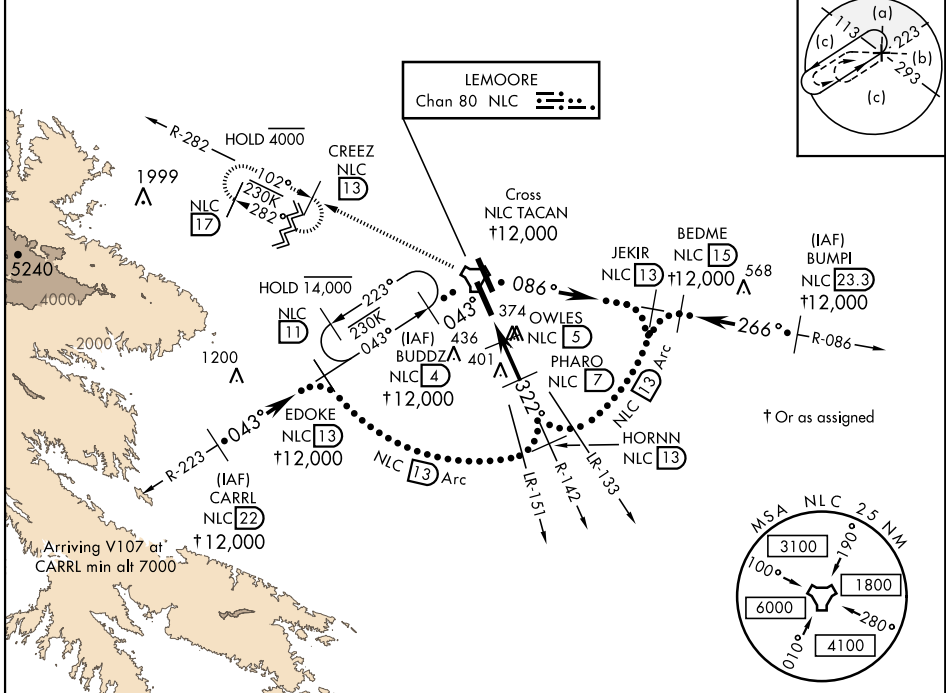


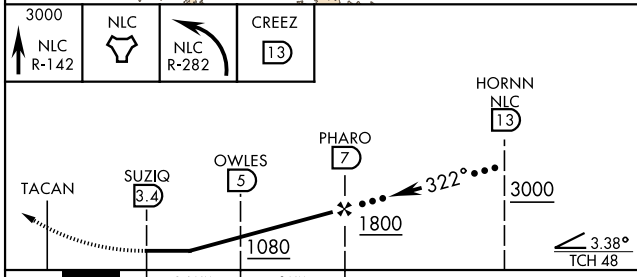
# HI-TACAN X RWY 32L

TACAN NLC Chan <b>80</b>	APCH CRS <b>322°</b>	Rwy Idg TDZE Arpt Elev <b>13,501</b> <b>227</b> <b>228</b>	AL-5067 [USN]	LEMOORE NAS (REEVES FIELD) (KNLC)	
* When ALS inop, increase CAT CDE vis to 1 mile.			ALSF-2	MISSED APPROACH: Climb to 3000 via R-142 to NLC TACAN, then via R-282 to CREEZ and hold.	
ATIS★ <b>121.575 327.15</b>	APP CON <b>124.1 269.025 (N)</b> <b>118.15 269.025 (S)</b>	TOWER★ <b>128.3 340.2</b>	GND CON <b>121.65 305.2</b>	CLNC DEL <b>124.1 371.9</b>	ASR/ PAR

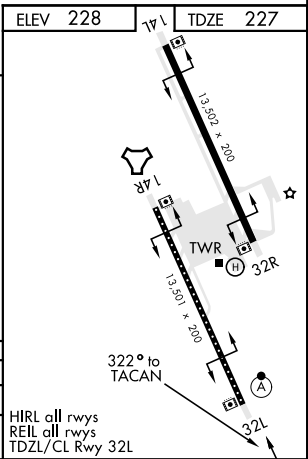
Simultaneous approach authorized.



EMERG SAFE ALT 100 NM 16,500



CATEGORY	C	D	E
S-32L *	580-5/8	353 (400-5/8)	
CIRCLING	700-1 1/2 472 (500-1 1/2)	780-2 552 (600-2)	



# HI-TACAN X RWY 32L

SW-2, 13 JUN 2024 to 11 JUL 2024

SW-2, 13 JUN 2024 to 11 JUL 2024