

# RNAV (GPS) RWY 32L

WAAS Chan <b>50085</b> <b>W32A</b>	APCH CRS <b>322°</b>	Rwy Idg <b>13,501</b> TDZE <b>227</b> Arprt Elev <b>228</b>
--	-------------------------	---

AL-5067 [USN]

LEMOORE NAS (REEVES FIELD) (KNLC)

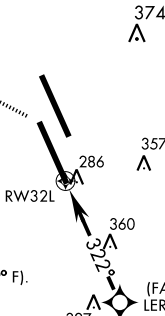
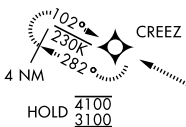
⚠ \* When ALS inop, increase vis to ¼ mile.  
 \*\* When ALS inop, increase CAT AB vis to 1 mile; CAT CD vis to 1¼ miles.



MISSED APPROACH: Climb to 1000, then climbing left turn to 3100 direct CREEZ and hold.

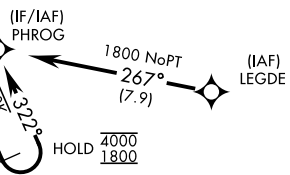
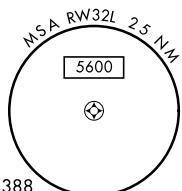
ATIS ★ <b>121.575 327.15</b>	APP CON <b>124.1 269.025 (N)</b> <b>118.15 269.025 (S)</b>	TOWER ★ <b>128.3 340.2</b>	GND CON <b>121.65 305.2</b>	CLNC DEL <b>124.1 371.9</b>	ASR/PAR
---------------------------------	--	-------------------------------	--------------------------------	--------------------------------	---------

DME/DME RNP-0.3 NA



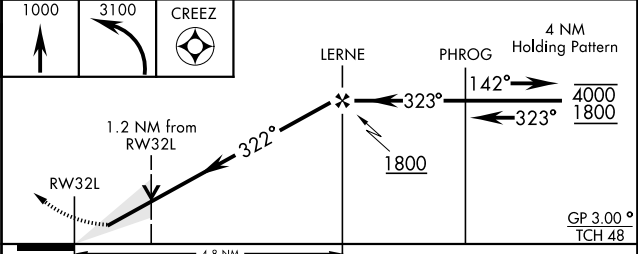
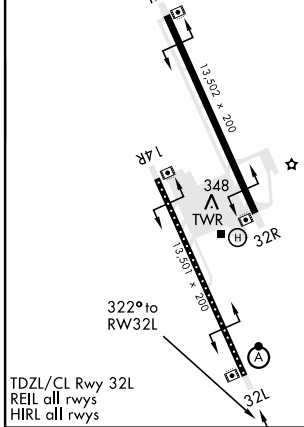
For uncompensated Baro-VNAV systems, LNAV/VNAV procedure NA below -15° C (5° F) and above 54° C (129° F).

Simultaneous approaches authorized.  
 LNAV procedure NA during Simultaneous operations.  
 Use of FD or AP providing RNAV track guidance required during simultaneous operations.



EMERG SAFE ALT 100 NM 16,500

ELEV 228	TDZE 227
----------	----------



CATEGORY	A	B	C	D
LPV DA *	427-½ 200 (200-½)			
LNAV/VNAV DA *	477-½ 250 (300-½) 482-½ 255 (300-½)			
LNAV MDA**	660-½ 433 (500-½) 660-¾ 433 (500-¾)			
Ⓢ CIRCLING	680-1 452 (500-1) 700-1½ 780-2 472 (500-1½) 552 (600-2)			

# RNAV (GPS) RWY 32L

SW-2, 13 JUN 2024 to 11 JUL 2024

SW-2, 13 JUN 2024 to 11 JUL 2024