

APP CRS	Rwy Idg	6506
182°	TDZE	407
	Apt Elev	411

RNAV (GPS) RWY 18L

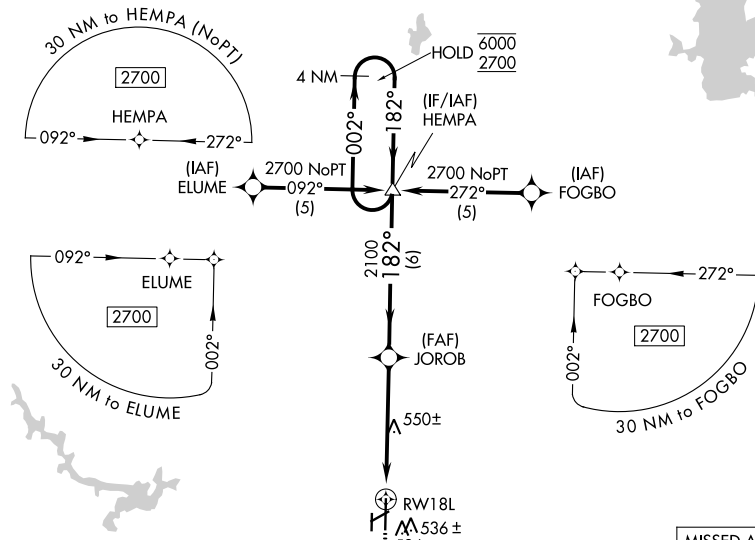
SOUTHERN ILLINOIS (MDH)

RNP APCH.		MALSR		MISSED APPROACH: Climb to 2700 direct SOPAW and hold.	
<p>▼ Circling Rwy 6, 36L NA at night.</p> <p>▲ For uncompensated Baro-VNAV systems, LNAV/VNAV NA below -15°C or above 54°C.</p>					

ATIS 119.725	KANSAS CITY CENTER 127.475 346.275	SOUTHERN TOWER * 125.35 (CTAF) 0 322.4	GND CON 121.8	UNICOM 122.95
------------------------	--	--	-------------------------	-------------------------

EC-3, 13 JUN 2024 to 11 JUL 2024

EC-3, 13 JUN 2024 to 11 JUL 2024



ELEV 411	TDZE 407
----------	----------

HIRL Rwy 18L-36R
MIRL Rwy 6-24
MIRL Rwy 18R-36L
REIL Rws 6, 24 and 36R

473±
3498 X 60
4163 X 100
494
6506 X 100
36L
36R

MISSED APCH FIX SOPAW			
		4 NM Holding Pattern	
*LNAV only			
<p>1.1 NM to RWY 18L</p>		<p>GP 3.00° TCH 55</p>	
CATEGORY	A	B	C
LNAV/VNAV DA	804-5/8		397 (400-5/8)
LNAV MDA	800-1/2	393 (400-1/2)	800-5/8 393 (400-5/8)
CIRCLING	900-1 489 (500-1)	920-1 509 (600-1)	1180-2 1/4 769 (800-2 1/4) 1180-2 1/2 769 (800-2 1/2)