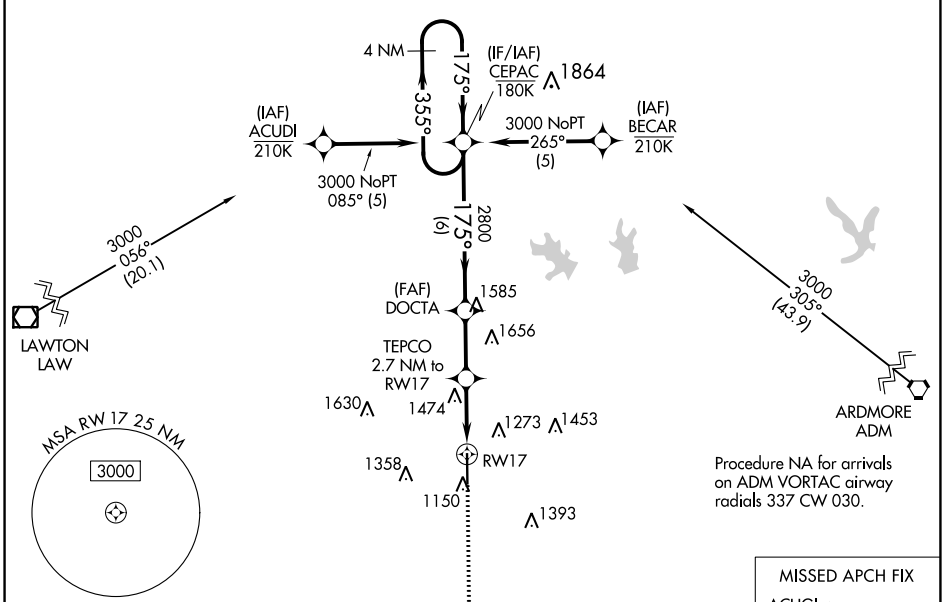


WAAS CH 93619 W17A	APP CRS 175°	Rwy Idg 6325 TDZE 1114 Apt Elev 1114
---------------------------------	------------------------	---

RNAV (GPS) RWY 17

HALLIBURTON FLD (DUC)

RNP APCH. For uncompensated Baro-VNAV systems, LNAV/VNAV NA below -17°C or above 54°C. Inop table does not apply to LPV all Cats, LNAV/VNAV all Cats, LNAV Cats C/D.		ODALS 	MISSED APPROACH: Climb to 3000 direct ACUGI and hold.
AWOS-3 119.075	FORT SILL APP CON 118.6 290.375	CLNC DEL 118.4	UNICOM 122.8 (CTAF) 0



SC-1, 13 JUN 2024 to 11 JUL 2024

SC-1, 13 JUN 2024 to 11 JUL 2024

