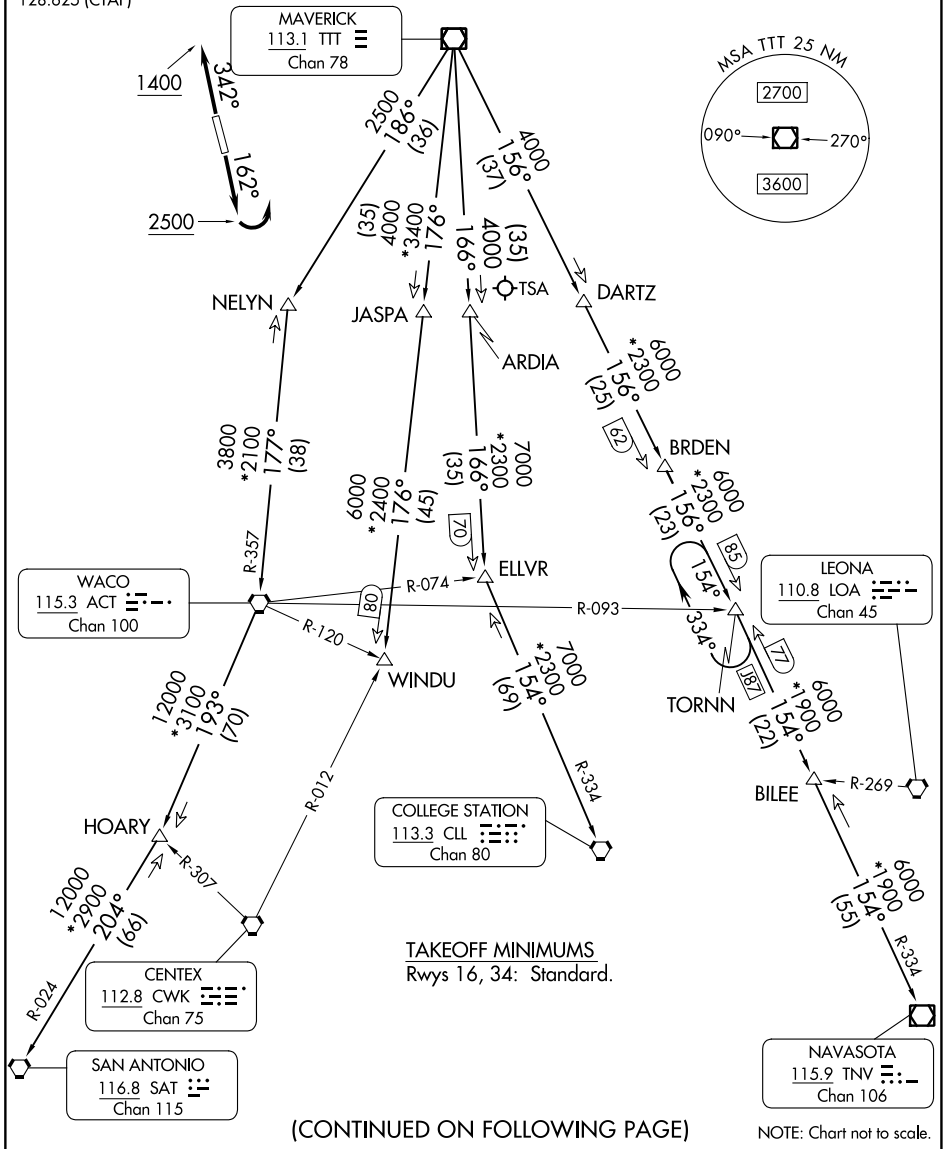


# JOE POOL SEVEN DEPARTURE

REGIONAL DEP CON  
135.975 379.9  
CLNC DEL  
121.875  
CLNC DEL (when twr closed)  
118.85  
GND CON  
121.875  
ARLINGTON TOWER ★  
128.625 (CTAF)

RADAR and DME required.

**TOP ALTITUDE:  
ASSIGNED BY ATC**



SC-2, 13 JUN 2024 to 11 JUL 2024

SC-2, 13 JUN 2024 to 11 JUL 2024

# JOE POOL SEVEN DEPARTURE

(CONTINUED ON FOLLOWING PAGE)

NOTE: Chart not to scale.