

WAAS CH 63119 W06A	APP CRS 063°	Rwy Idg TDZE Apt Elev	5013 394 398
--	------------------------	-----------------------------	---

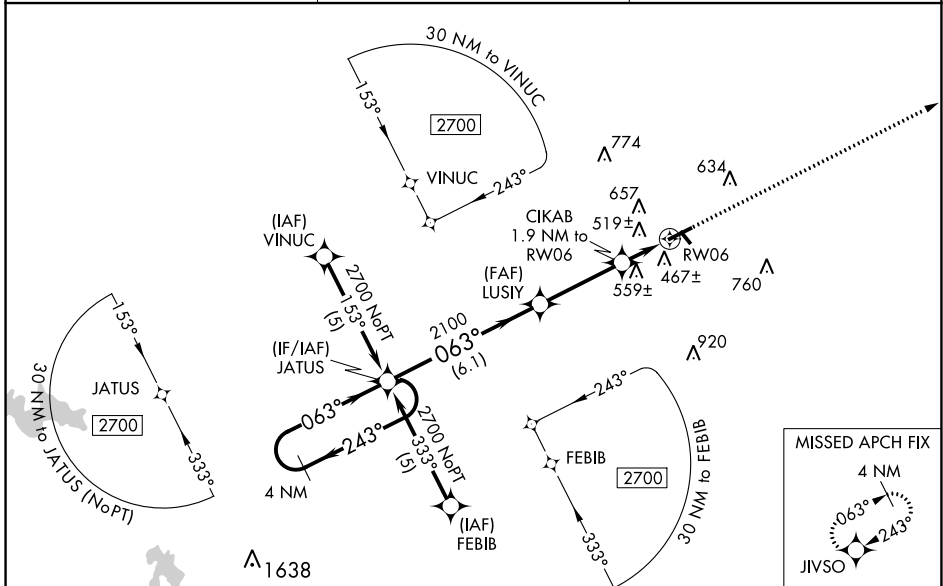
RNAV (GPS) RWY 6

HARRISBURG-RALEIGH (HSB)

Baro-VNAV NA when using Williamson County Rgnl altimeter setting. For uncompensated Baro-VNAV systems, LNAV/VNAV NA below -15°C (5°F) or above 48°C (118°F). DME/DME RNP-0.3 NA. Visibility reduction by helicopters NA. When local altimeter setting not received, use Marion altimeter setting: increase LPV DA to 744 feet; increase LNAV/VNAV DA to 1020 feet; increase all MDAs 80 feet and LNAV visibility Cat C/D 1/4 SM and Circling visibility Cat C/D 1/4 SM. VDP NA with Williamson County Rgnl altimeter setting.

MISSED APPROACH:
Climb to 2000 direct JIVSO and hold.

AWOS-3PT 135.925	KANSAS CITY CENTER 127.475 346.275	UNICOM 122.8 (CTAF) 0
----------------------------	--	---------------------------------



4 NM Holding Pattern JATUS		2000 JIVSO		
GP 3.00° TCH 35°		*LNAV only		
2700 ← 243° / 063° →		*1.3 NM to RW06		
← 063° →		*1020		
← 2100 →		← 063° →		
← 6.1 NM →		← 3.3 NM →		
← 0.6 NM →		← 1.3 NM →		
CATEGORY	A	B	C	D
LPV DA		682-1	288 (300-1)	
LNAV/VNAV DA		958-2	564 (600-2)	
LNAV MDA	820-1	426 (500-1)	820-1¼	426 (500-1¼)
CIRCLING	900-1 502 (600-1)	1020-1 622 (700-1)	1020-1¾ 622 (700-1¾)	1080-2¼ 682 (700-2¼)

