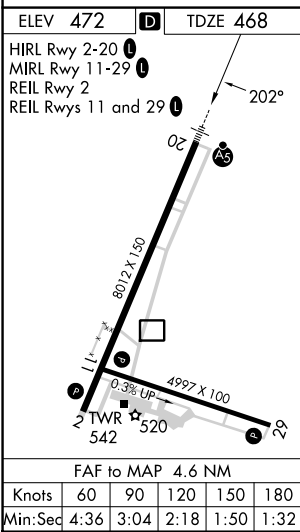
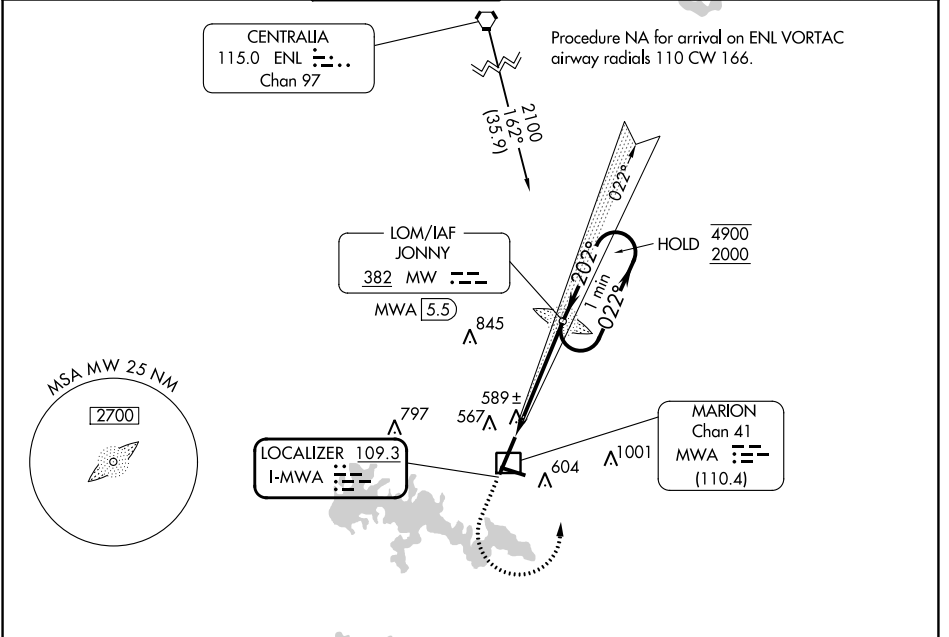


| | | |
|---------------------------|------------------------|---|
| LOC I-MWA 109.3 | APP CRS 202° | Rwy Idg 8012 TDZE 468 Apt Elev 472 |
|---------------------------|------------------------|---|

ILS or LOC RWY 20

VETERANS AIRPORT OF SOUTHERN ILLINOIS (MWA)

| | | | | | | | |
|--|--|----------------------------|---|---|--|-------------------------|-------------------------|
| DME required. ADF required. | | MALSR | MISSED APPROACH: Climb to 1500 then climbing left turn to 2000 direct JONNY LOM/MWA 5.5 DME and hold. | | | | |
| <p>▼ Circling Rwy 11 NA at night. For inop ALS, increase S-LOC 20</p> <p>▲ Cat C/D visibilities to 1 SM.</p> | | AWOS-3PT 119.675 | KANSAS CITY CENTER 127.475 346.275 | MARION TOWER ★ 128.4 (CTAF) 0 | CLNC DEL 127.475 (When twr closed) | GND CON 121.7 | UNICOM 122.95 |



| | | | | |
|-------------|----------------------|----------------------|-------------------------|----------------------------|
| 1500 | 2000 | MW | MW LOM MWA 5.5 | One Minute Holding Pattern |
| * LOC only. | | * MWA 1.9 | 1990 | 4900 2000 |
| 1 NM | | 3.6 NM | 2000 | GS 3.00° TCH 50 |
| CATEGORY | A | B | C | D |
| S-ILS 20 | 668-½ | | 200 (200-½) | |
| S-LOC 20 | 840-½ | 372 (400-½) | 840-⅝ | 372 (400-⅝) |
| CIRCLING | 920-1 448 (500-1) | 940-1 468 (500-1) | 1040-1½ 568 (600-1½) | 1340-2¾ 868 (900-2¾) |

EC-3, 13 JUN 2024 to 11 JUL 2024

EC-3, 13 JUN 2024 to 11 JUL 2024