

WAAS CH <b>61230</b> <b>W02A</b>	APP CRS <b>022°</b>	Rwy Idg TDZE <b>466</b> Apt Elev <b>472</b>	<b>8012</b>
--	------------------------	---	-------------

# RNAV (GPS) RWY 2

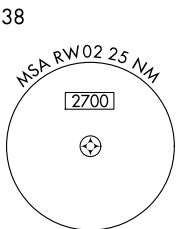
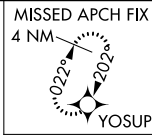
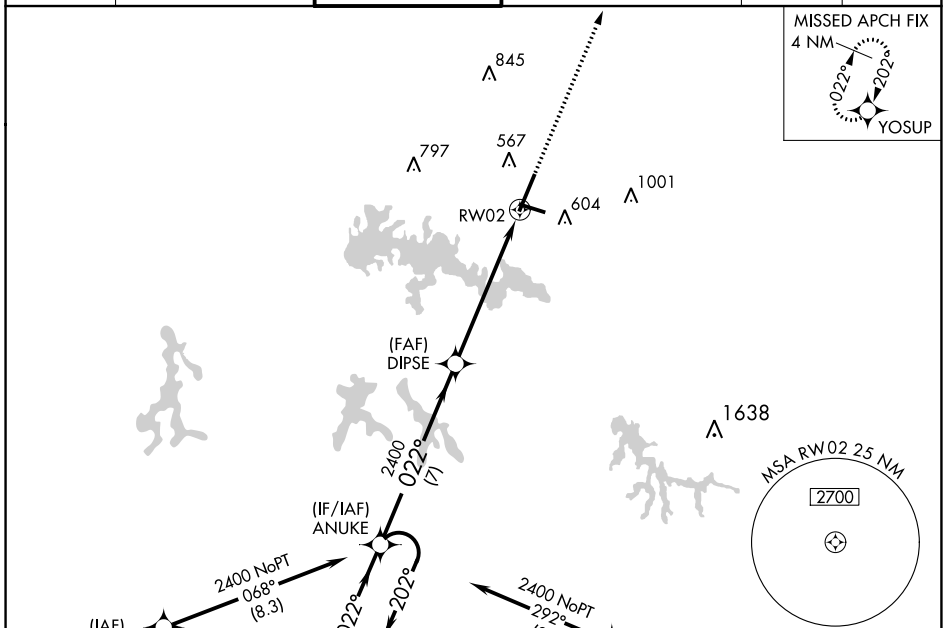
VETERANS AIRPORT OF SOUTHERN ILLINOIS (MWA)

RNP APCH.

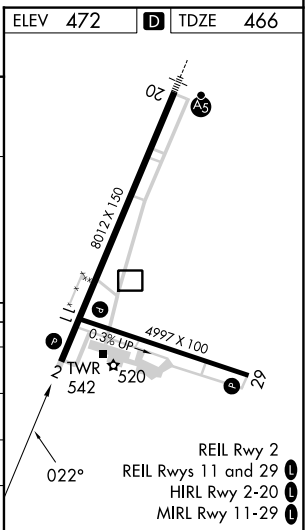
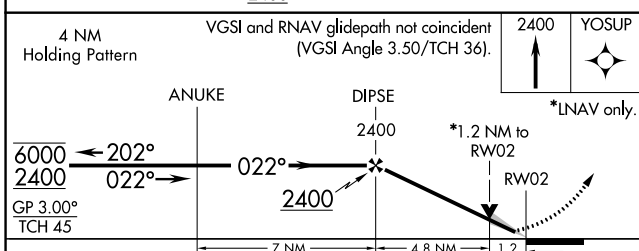
**⚠** Circling Rwy 11 NA at night. For uncompensated Baro-VNAV systems, LNAV/VNAV NA below -15°C or above 54°C.

MISSED APPROACH:  
Climb to 2400 direct  
YOSUP and hold.

AWOS-3PT <b>119.675</b>	KANSAS CITY CENTER <b>127.475 346.275</b>	MARION TOWER ★ <b>128.4 (CTAF) 0</b>	CLNC DEL <b>127.475</b> (When twr closed)	GND CON <b>121.7</b>	UNICOM <b>122.95</b>
----------------------------	--	---	--	-------------------------	-------------------------



ELEV 472	<b>D</b> TDZE 466
----------	-------------------



CATEGORY	A	B	C	D
LPV DA		666- <sup>3</sup> / <sub>4</sub>	200 (200- <sup>3</sup> / <sub>4</sub> )	
LNAV/VNAV DA		753- <sup>7</sup> / <sub>8</sub>	287 (300- <sup>7</sup> / <sub>8</sub> )	
LNAV MDA	940-1	474 (500-1)	940-1 <sup>3</sup> / <sub>8</sub>	474 (500-1 <sup>3</sup> / <sub>8</sub> )
CIRCLING	940-1	468 (500-1)	1040-1 <sup>1</sup> / <sub>2</sub>	1340-2 <sup>3</sup> / <sub>4</sub>
			568 (600-1 <sup>1</sup> / <sub>2</sub> )	868 (900-2 <sup>3</sup> / <sub>4</sub> )

EC-3, 13 JUN 2024 to 11 JUL 2024

EC-3, 13 JUN 2024 to 11 JUL 2024