

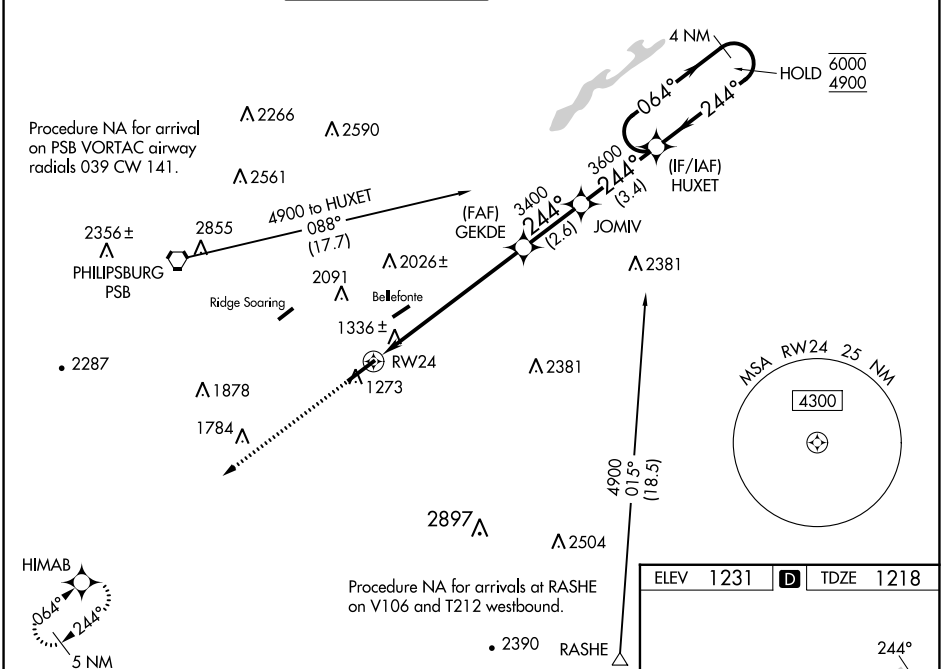



WAAS CH 61309 W24A	APP CRS 244°	Rwy Idg TDZE Apt Elev	6701 1218 1231
----------------------------------------	------------------------	-----------------------------	-------------------------------------------


RNAV (GPS) RWY 24



STATE COLLEGE RGNL (UNV)

RNP APCH - GPS.		<p>⚠ Circling NA northwest of Rwy 6-24. For uncompensated Baro-VNAV systems, LNAV/VNAV NA below -17°C or above 54° C. For inop ALS, increase LNAV/VNAV all Cats visibility to RVR 6000.</p> <p>* RVR 1800 authorized with use of FD or AP or HUD to DA (NA when using Clearfield altimeter setting)</p>		<p>MALSR</p> 		<p>MISSED APPROACH: Climb to 4400 direct HIMAB and hold, continue climb-in-hold to 4400.</p>	
D-ATIS 127.65	NEW YORK CENTER 134.8 338.3	UNIVERSITY PARK ★ 128.475 (CTAF) 	GND CON 125.725	CLNC DEL 125.725	CLNC DEL 118.55 (When twr closed)	UNICOM 122.95	



4400	HIMAB	HUXET		4 NM Holding Pattern
		GEKDE	JOMIV	
		3400	3600	
		244°	064°	6000
			244°	4900
				GP 3.00°
				TCH 55
		1.2 NM	5.5 NM	2.6 NM
			3.4 NM	
CATEGORY		A	B	C
LPV DA*			1418/24	200 (200-½)
LNAV/VNAV DA			1619/40	401 (400-¾)
LNAV MDA		1640/24	422 (500-½)	1640/40 422 (500-¾)
CIRCLING		1640-1 409 (500-1)	1700-1 469 (500-1)	1940-2 709 (800-2) 2560-3 1329 (1400-3)

ELEV 1231		TDZE 1218
-----------	-----------------------------------------------------------------------------------	-----------

REIL Rwy 6 
HIRL Rwy 6-24 

NE-4, 13 JUN 2024 to 11 JUL 2024

NE-4, 13 JUN 2024 to 11 JUL 2024