

WAAS CH <b>42616</b> <b>W02A</b>	APP CRS <b>022°</b>	Rwy Idg TDZE Apt Elev	<b>3501</b> <b>696</b> <b>699</b>
--	------------------------	-----------------------------	---

# RNAV (GPS) RWY 2

SOUTHBRIDGE MUNI (3B0)

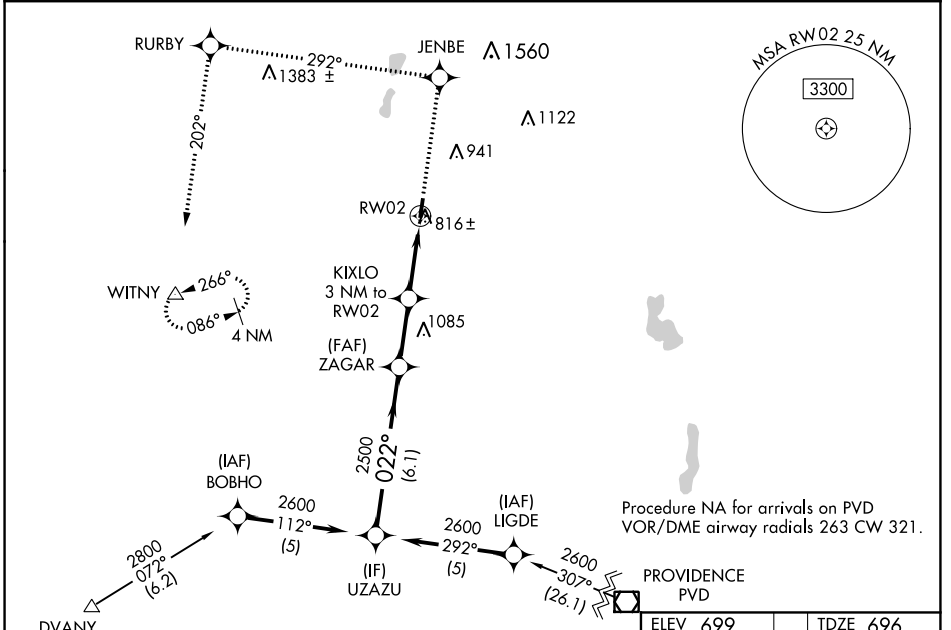
RNP APCH - GPS.

**NA** Circling Rwy 20 NA at night. Use Worcester Rgnl altimeter setting, when not received, use Windsor Locks altimeter setting: increase LPV DA to 1090 feet and all visibilities 1/8 SM. Increase all MDAs 80 feet and LNAV visibility Cat C 1/4 SM, and Circling visibility Cat C 1/2 SM.

**MISSED APPROACH:** Climb to 3000 direct JENBE and via track 292° to RURBY and via track 202° to WITNY and hold.

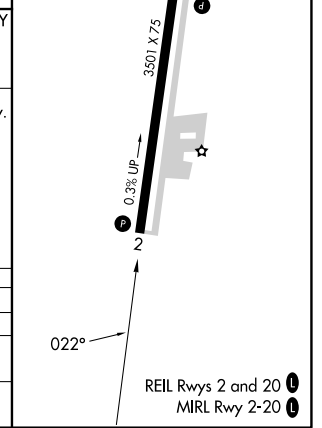
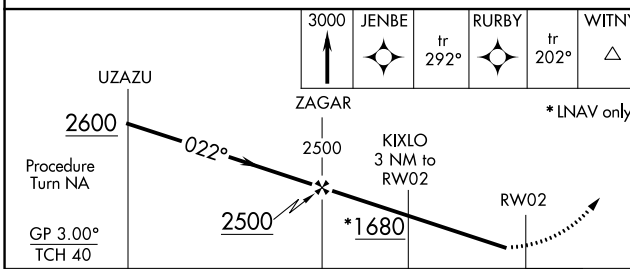
BRADLEY APP CON  
**119.0 327.1**

UNICOM  
**122.8 (CTAF)**



Procedure NA for arrivals at DVANY on V229 and V1 southwest bound.

ELEV 699	TDZE 696
----------	----------



CATEGORY	A	B	C	D
LPV DA	1018-1		322 (400-1)	NA
LNAV MDA	1300-1	604 (700-1)	1300-1 1/4 604 (700-1 1/4)	NA
<b>C</b> CIRCLING	1360-1	661 (700-1)	1360-1 1/4 661 (700-1 1/4)	NA

NE-1, 13 JUN 2024 to 11 JUL 2024

NE-1, 13 JUN 2024 to 11 JUL 2024