

WAAS CH <b>70712</b> <b>W14A</b>	APP CRS <b>144°</b>	Rwy Idg TDZE Apt Elev	<b>5498</b> <b>726</b> <b>726</b>
--	------------------------	-----------------------------	---

# RNAV (GPS) RWY 14

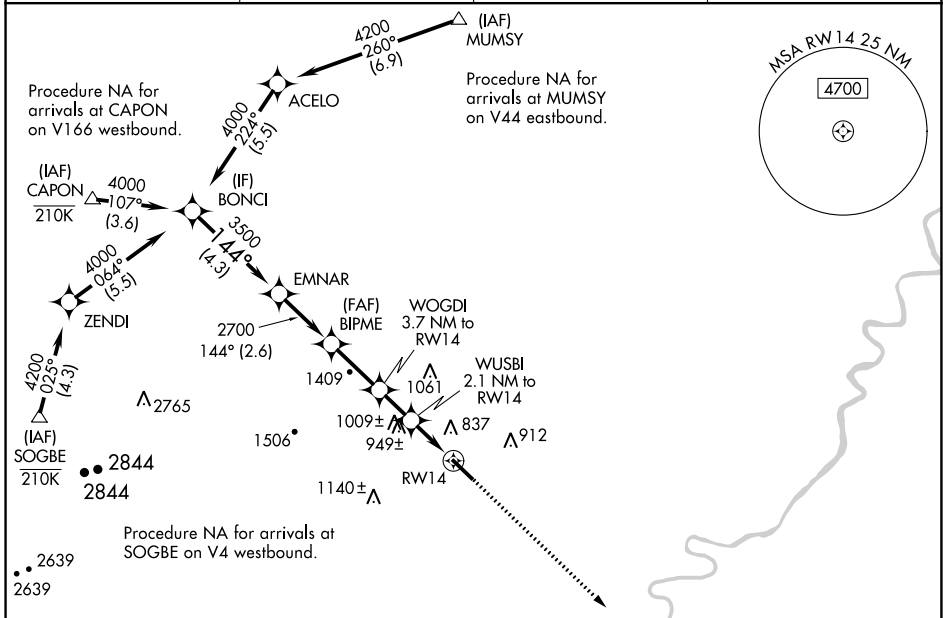
WINCHESTER RGNL (OKV)

RNP APCH - GPS.

**⚠** Rwy 14 helicopter visibility reduction below  $\frac{3}{4}$  SM NA. For uncompensated Baro-VNAV systems, LNAV/VNAV NA below -16°C or above 54°C.

**MISSED APPROACH:**  
Climb to 3700 direct CLADD and hold, continue climb-in-hold to 3700.

AWOS-3 <b>124.85</b>	POTOMAC APP CON <b>120.45 306.925</b>	CLNC DEL <b>126.15</b>	UNICOM <b>122.975 (CTAF) 0</b>
-------------------------	--	---------------------------	-----------------------------------



ELEV 726	TDZE 726
----------	----------

	BONCI	EMNAR	BIPME	WOGDI	WUSBI	CLADD
	4000	3500	2700	1940	1440	3700
	GP 3.00°					
	TCH 45					
	4.3 NM	2.6 NM	2.4 NM	1.6 NM	0.6 NM	1.5 NM
CATEGORY	A	B	C	D		
LPV DA		976- $\frac{3}{4}$	250 (300- $\frac{3}{4}$ )			
LNAV/VNAV DA		1040- $\frac{7}{8}$	314 (400- $\frac{7}{8}$ )			
LNAV MDA	1200-1	474 (500-1)	1200-1 $\frac{3}{8}$	474 (500-1 $\frac{3}{8}$ )		
<b>C</b> CIRCLING	1200-1 474 (500-1)	1220-1 494 (500-1)	1380-1 $\frac{3}{4}$ 654 (700-1 $\frac{3}{4}$ )	1500-2 $\frac{1}{2}$ 774 (800-2 $\frac{1}{2}$ )		

NE-3, 13 JUN 2024 to 11 JUL 2024