

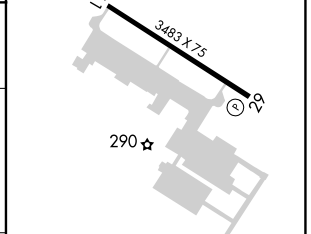
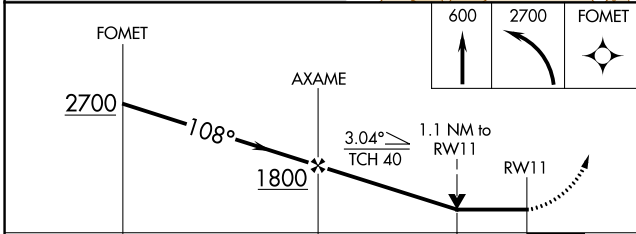
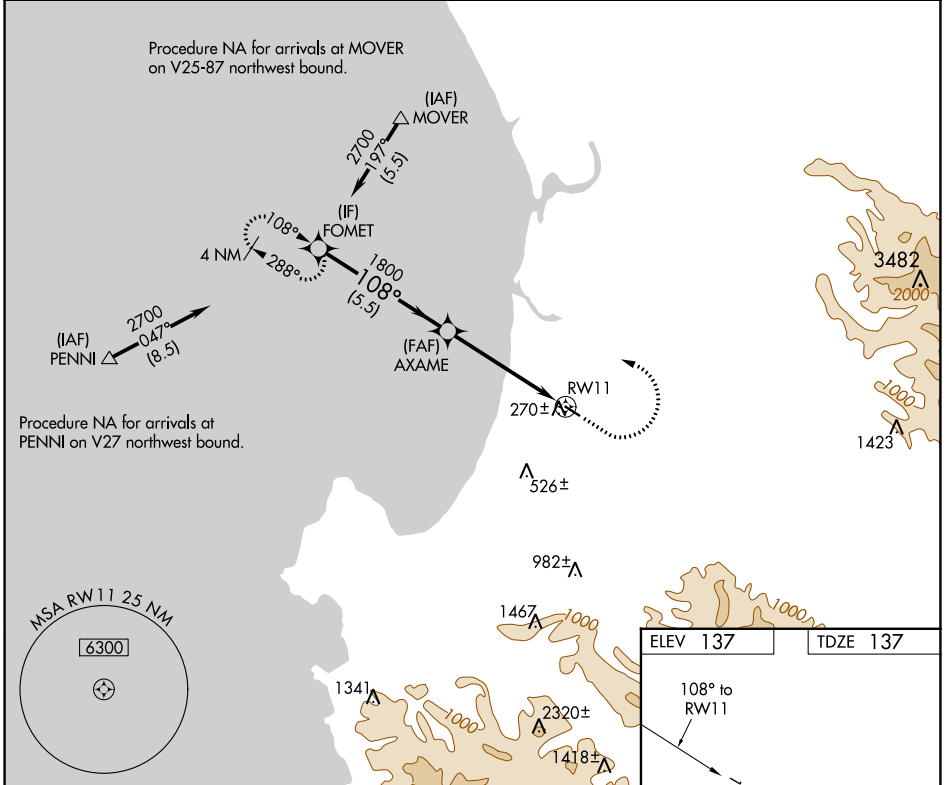
APP CRS	Rwy ldg	3483
108°	TDZE	137
	Apt Elev	137

RNAV (GPS) RWY 11

MARINA MUNI (OAR)

RNP APCH.	MISSED APPROACH: Climb to 600, then climbing left turn to 2700 direct FOMET and hold, continue climb-in-hold to 2700.
Rwy 11 helicopter visibility reduction below 3/4 SM NA.	

AWOS-3PT 134.025	NORCAL APP CON 133.0 251.15	UNICOM 122.7 (CTAF) 0
----------------------------	---------------------------------------	---------------------------------



CATEGORY	A	B	C	D
LNVA MDA	520-1	383 (400-1)	NA	
CIRCLING	640-1 503 (600-1)	760-1 623 (700-1)	NA	

ELEV	137	TDZE	137
------	-----	------	-----

MIRL Rwy 11-29 0

SW-2, 13 JUN 2024 to 11 JUL 2024

SW-2, 13 JUN 2024 to 11 JUL 2024