

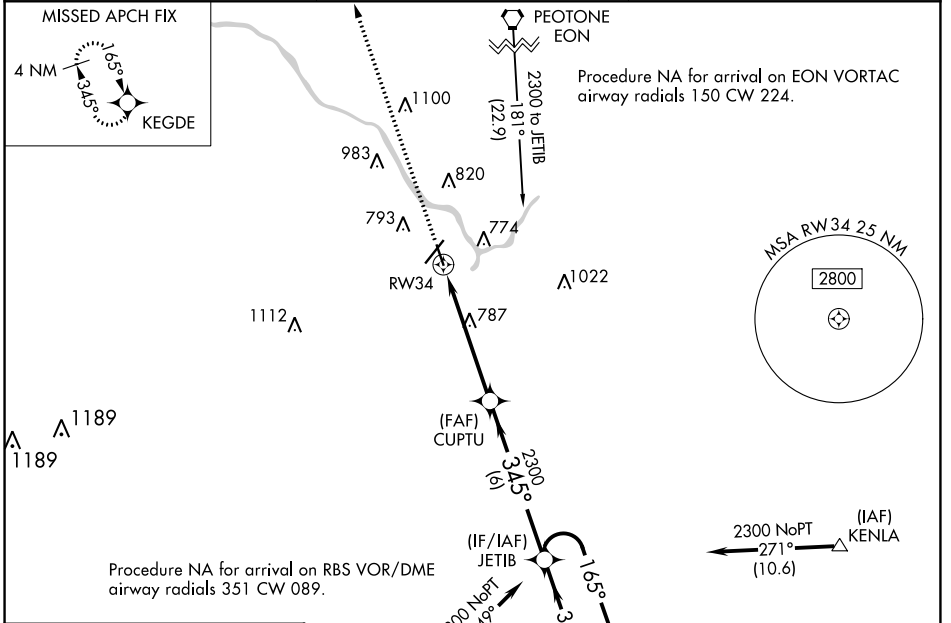
WAAS CH <b>86731</b> <b>W34A</b>	APP CRS <b>345°</b>	Rwy Idg TDZE <b>620</b> Apt Elev <b>630</b>	<b>4398</b>
--	------------------------	---	-------------

# RNAV (GPS) RWY 34

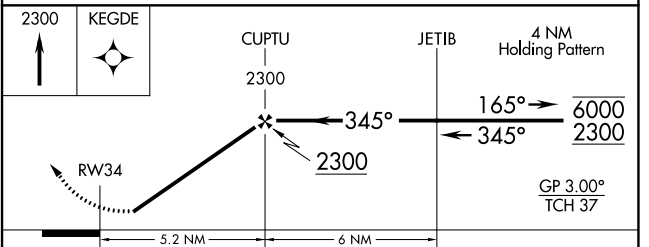
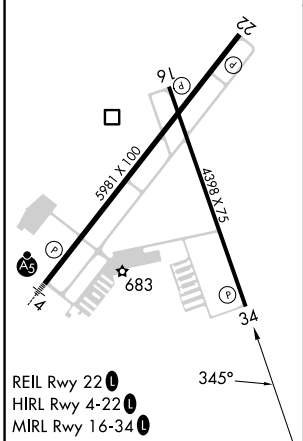
GREATER KANKAKEE (IKK)

RNP APCH.	MISSED APPROACH: Climb to 2300 direct KEGDE and hold.
<p>▼ Rwy 34 helicopter visibility reduction below 1 SM NA. For uncompensated Baro-VNAV systems, LNAV/VNAV NA below -16° C or above 54° C.</p> <p>▲ Straight-in and Circling Rwy 34 NA at night, Circling Rwy 16 NA at night.</p>	

AWOS-3 <b>128.475</b>	CHICAGO CENTER <b>132.5 284.7</b>	UNICOM <b>123.0 (CTAF)</b>
--------------------------	--------------------------------------	-------------------------------



ELEV 630	TDZE 620
----------	----------



CATEGORY	A	B	C	D
LPV DA		870-1	250 (300-1)	
LNAV/VNAV DA		885-1	265 (300-1)	
LNAV MDA	1040-1	420 (500-1)	1040-1½	420 (500-1½)
<input checked="" type="checkbox"/> CIRCLING	1080-1 450 (500-1)	1100-1 470 (500-1)	1140-1½ 510 (600-1½)	1340-2½ 710 (800-2½)

EC-3, 13 JUN 2024 to 11 JUL 2024

EC-3, 13 JUN 2024 to 11 JUL 2024