

WAAS CH 69509 W27A	APP CRS 275°	Rwy ldg 5108 TDZE 455 Apt Elev 461
--	------------------------	---

RNAV (GPS) RWY 27

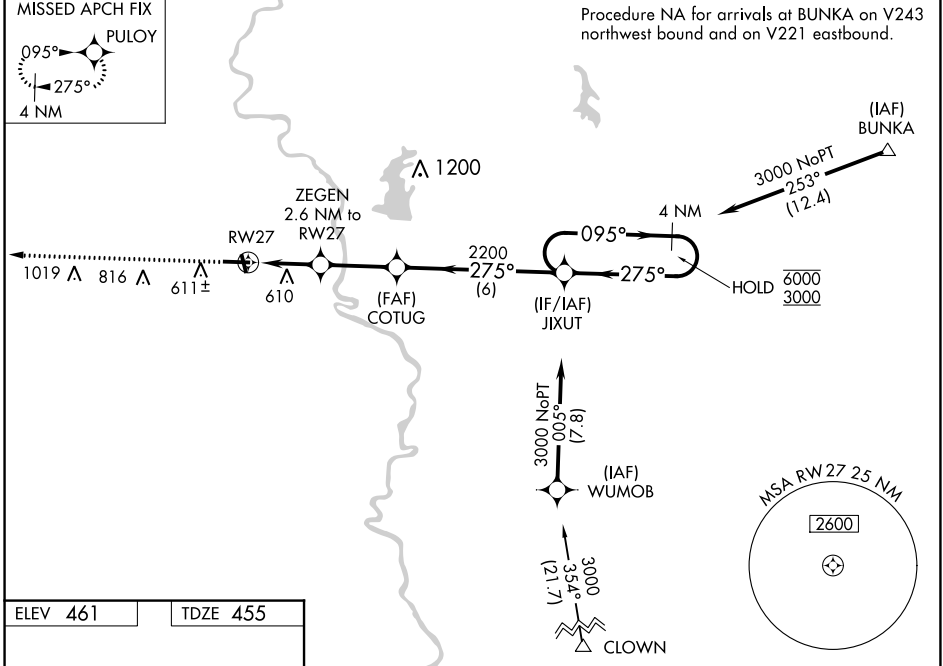
CRAWFORD COUNTY (RSV)

RNP APCH-GPS.

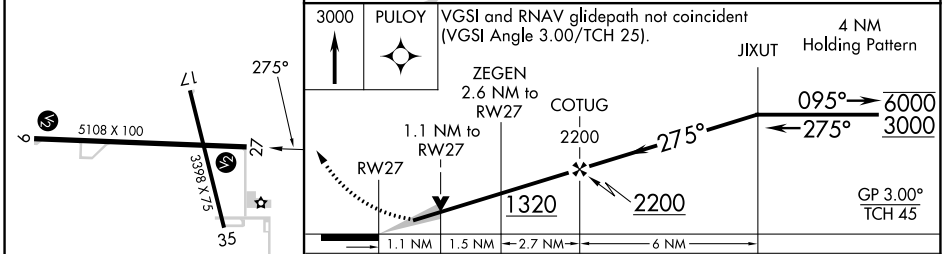
⚠ For uncompensated Baro-VNAV systems, LNAV/VNAV NA below -15°C or above 54°C.

MISSED APPROACH: Climb to 3000 direct PULOY and hold.

AWOS-3 120.50	HULMAN APP CON 119.25 339.8	UNICOM 123.0 (CTAF)
-------------------------	---------------------------------------	-------------------------------



ELEV 461	TDZE 455
----------	----------



CATEGORY	A	B	C	D
LPV DA	705-1		250 (300-1)	
LNAV/VNAV DA	845-1¼		390 (400-1¼)	
LNAV MDA	840-1 385 (400-1)		840-1⅛ 385 (400-1⅛)	
C CIRCLING	940-1 479 (500-1)	1080-1 619 (700-1)	1120-1¾ 659 (700-1¾)	1180-2¼ 719 (800-2¼)

EC-3, 13 JUN 2024 to 11 JUL 2024

EC-3, 13 JUN 2024 to 11 JUL 2024