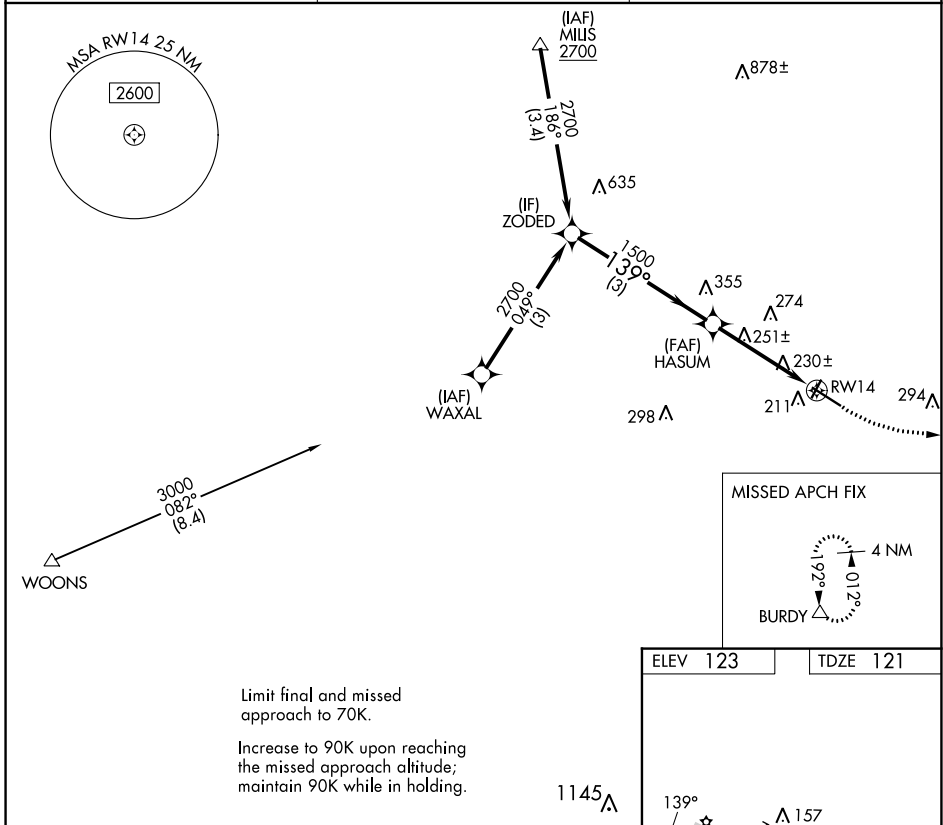


WAAS CH 50444 W14B	APP CRS 139°	Rwy Ldg TDZE 121 Apt Elev 123	2991
--	------------------------	---	-------------

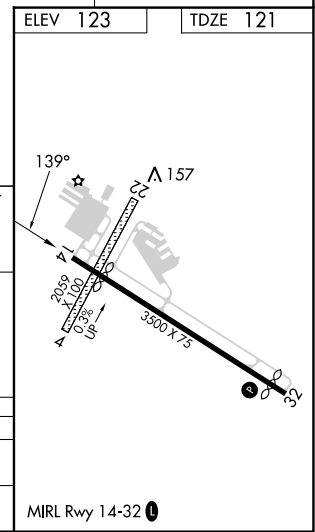
COPTER RNAV (GPS) Y RWY 14

MANSFIELD MUNI (1B9)

RNP APCH - GPS.		MISSED APPROACH: Climbing left turn to 2000 direct BURDY and hold.
Procedure NA at night. Use Taunton altimeter setting.		
TAN ASOS 132.675	BOSTON APP CON 124.1	UNICOM 123.0 (CTAF)



ZODED	2700	139°	HASUM	1500	5.70° TCH 40	RWY 14
3 NM		2.2 NM				
CATEGORY	COPTER					
LP MDA	520-1		399 (400-1)			
LNAV MDA	580-1		459 (500-1)			



NE-1, 13 JUN 2024 to 11 JUL 2024

NE-1, 13 JUN 2024 to 11 JUL 2024