

GRIFFITH, INDIANA

AL-5431 (FAA)

24137

VORTAC CGT 114.2 Chan 89	APP CRS 084°	Rwy Idg TDZE 634 Apt Elev 634	4899
----------------------------------------------	------------------------	---------------------------------------------------	-------------

VOR RWY 8

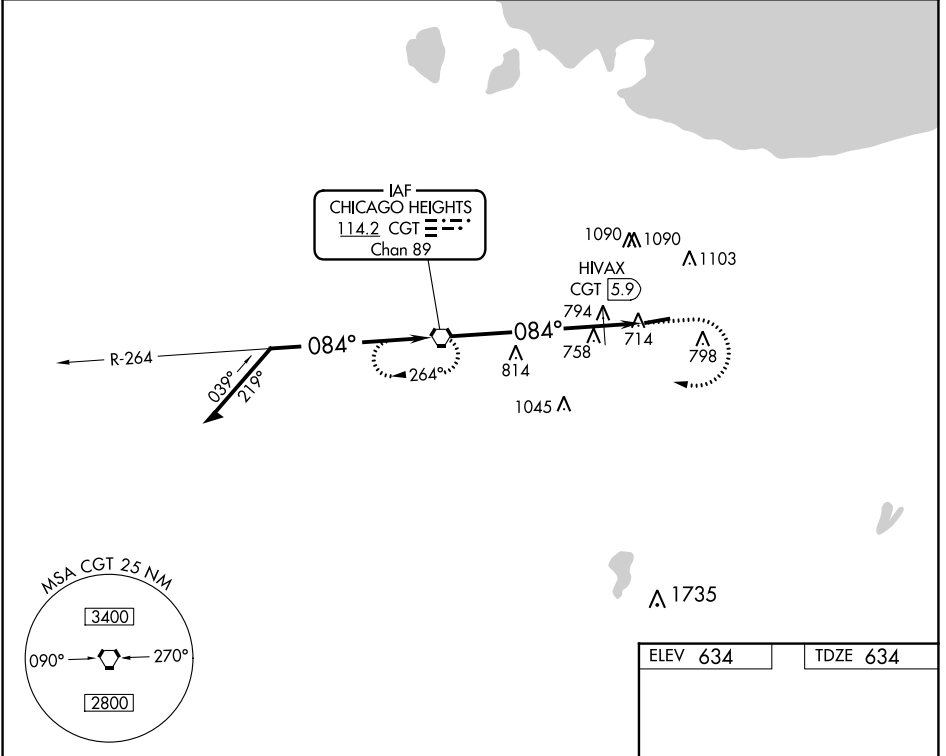
GRIFFITH-MERRILLVILLE (05C)

NA Obtain local altimeter setting on CTAF; when not received, use Chicago Midway Intl altimeter setting and increase all MDAs 60 feet. Visibility reduction by helicopters NA. Procedure NA at night.

MISSED APPROACH: Climb to 1100 then climbing right turn to 2300 direct CGT VORTAC and hold.

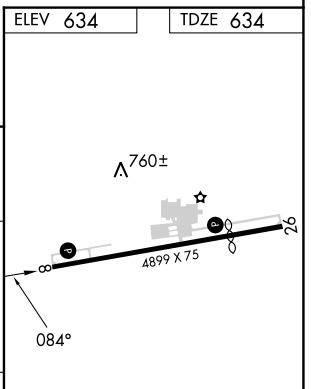
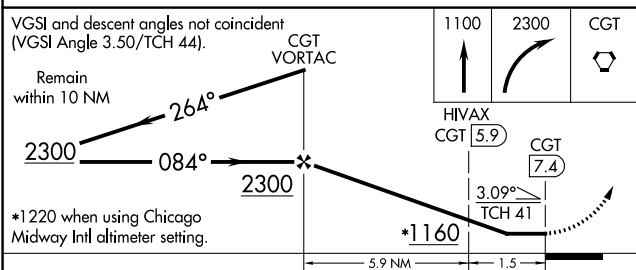
CHICAGO APP CON
133.1 285.6

UNICOM
123.0 (CTAF) 0



EC-2, 13 JUN 2024 to 11 JUL 2024

EC-2, 13 JUN 2024 to 11 JUL 2024



CATEGORY	A	B	C	D
S-8	1160-1	526 (600-1)		NA
CIRCLING	1200-1	566 (600-1)		NA
HIVAX FIX MINIMUMS				
S-8	1060-1	426 (500-1)		NA
CIRCLING	1200-1	566 (600-1)		NA

REIL Rwy 8 and 26 0					
MIRL Rwy 8-26 0					
FAF to MAP 7.4 NM					
Knots	60	90	120	150	180
Min:Sec	7:24	4:56	3:42	2:58	2:28

GRIFFITH, INDIANA
Amdt 8B 24MAY18

41°31'N-87°24'W

GRIFFITH-MERRILLVILLE (05C) VOR RWY 8