

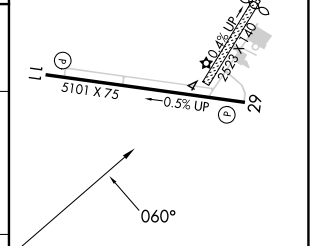
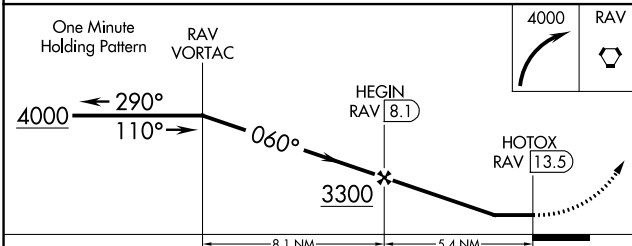
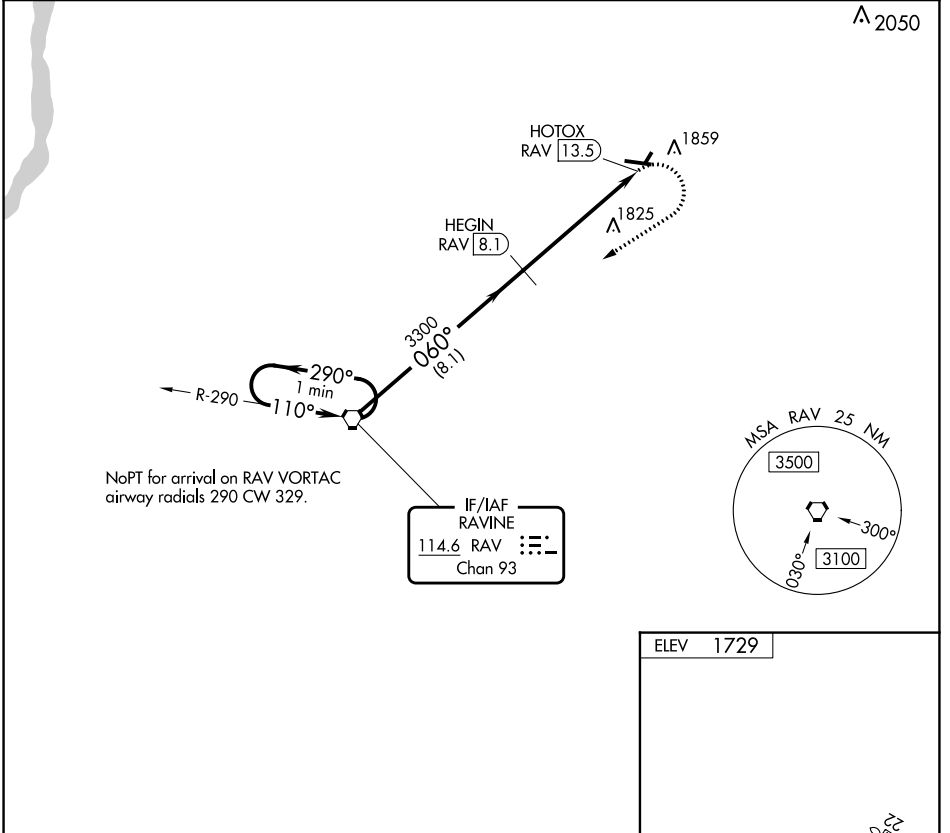
VORTAC RAV 114.6 Chan 93	APP CRS 060°	Rwy Idg TDZE Apt Elev N/A N/A 1729
--	------------------------	--

VOR-A
SCHUYLKILL COUNTY/JOE ZERBEY (Z.F.R.)

NA Circling to Rwy 4, 22 NA at night. DME required.
When local altimeter setting not received, use Penn Valley altimeter setting and increase all MDAs 280 feet and visibility Cat C and D ¾ SM.

MISSED APPROACH: Climbing right turn to 4000 direct RAV VORTAC and hold.

AWOS-3 127.575	HARRISBURG APP CON 118.25 269.45	UNICOM 123.075 (CTAF) 0
--------------------------	--	--



CATEGORY	A	B	C	D	
C CIRCLING	2160-1 431 (500-1)	2180-1 451 (500-1)	2240-1½ 511 (600-1½)	2280-2 551 (600-2)	MIRL Rwy 11-29 0 REIL Rwys 11 and 29 0

NE-4, 13 JUN 2024 to 11 JUL 2024

NE-4, 13 JUN 2024 to 11 JUL 2024