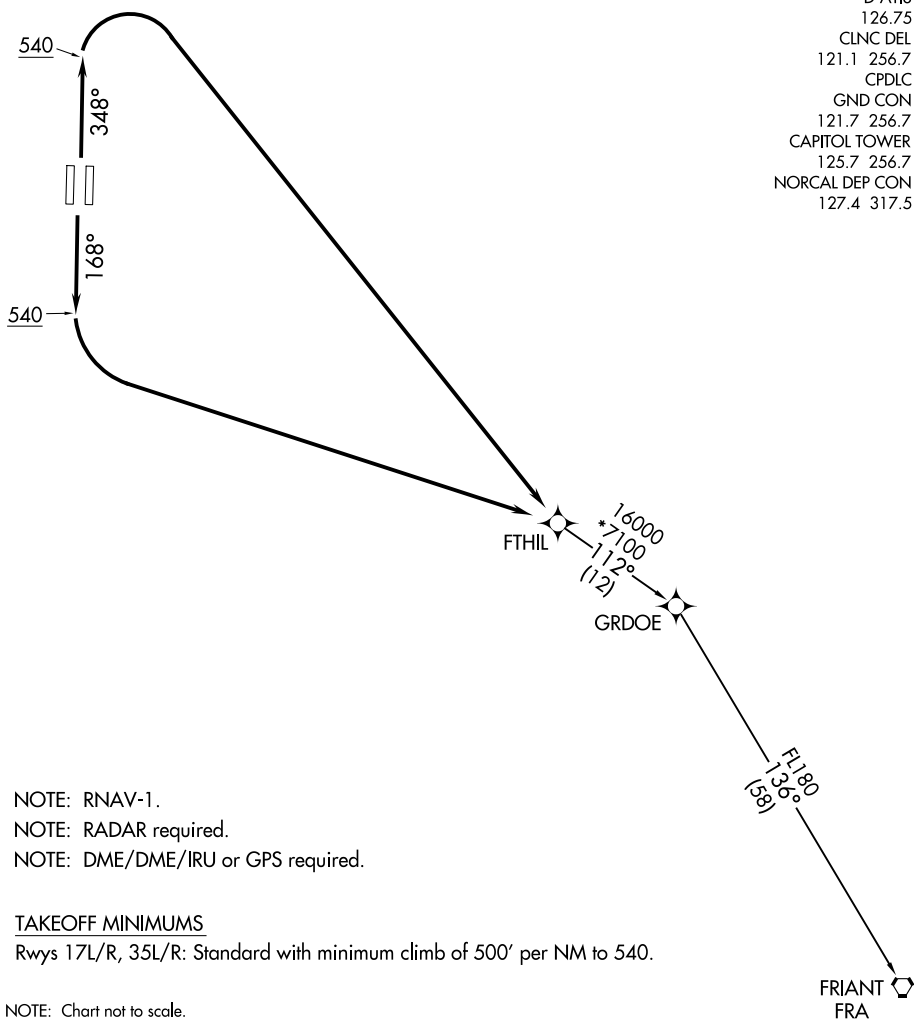


(FTHIL3.FTHIL) 20142

# FTHIL THREE DEPARTURE(RNAV)

AL-5490 (FAA)

SACRAMENTO INTL (SMF)  
SACRAMENTO, CALIFORNIA



- D-ATIS 126.75
- CLNC DEL 121.1 256.7
- CPDLC 121.7 256.7
- GND CON 121.7 256.7
- CAPITOL TOWER 125.7 256.7
- NORCAL DEP CON 127.4 317.5

SW-2, 13 JUN 2024 to 11 JUL 2024

SW-2, 13 JUN 2024 to 11 JUL 2024

- NOTE: RNAV-1.
- NOTE: RADAR required.
- NOTE: DME/DME/IRU or GPS required.

### TAKEOFF MINIMUMS

Rwys 17L/R, 35L/R: Standard with minimum climb of 500' per NM to 540.

NOTE: Chart not to scale.



### DEPARTURE ROUTE DESCRIPTION

TAKEOFF RUNWAYS 17L/R: Climb on heading 168° to 540, then left turn direct FTHIL. Thence. . .

TAKEOFF RUNWAYS 35L/R: Climb on heading 348° to 540, then right turn direct FTHIL. Thence. . .

. . . on transition. Maintain FL190. Expect filed altitude 10 minutes after departure.

FRIANT TRANSITION (FTHIL3.FRA)

# FTHIL THREE DEPARTURE(RNAV)

(FTHIL3.FTHIL) 21MAY20

SACRAMENTO, CALIFORNIA  
SACRAMENTO INTL (SMF)