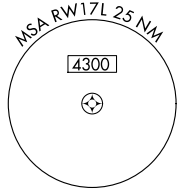
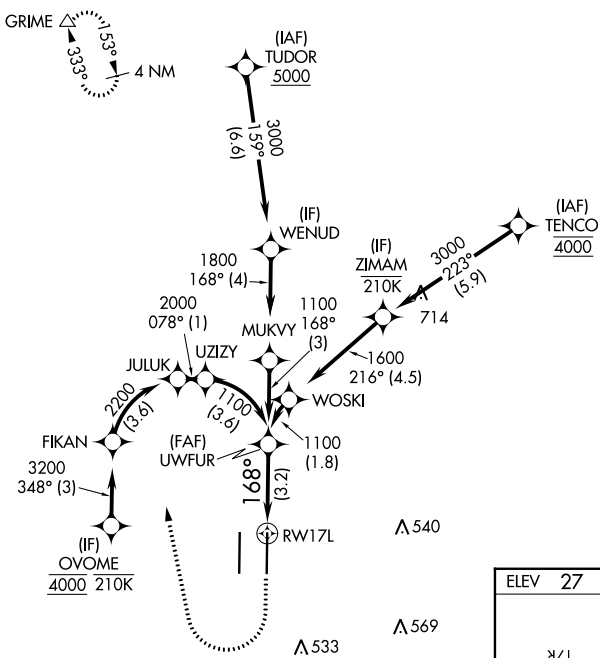


APP CRS	Rwy Idg	8605
168°	TDZE	27
	Apt Elev	27

RNAV (RNP) Z RWY 17L

SACRAMENTO INTL (SMF)

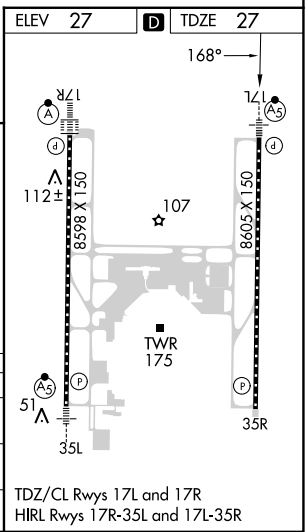
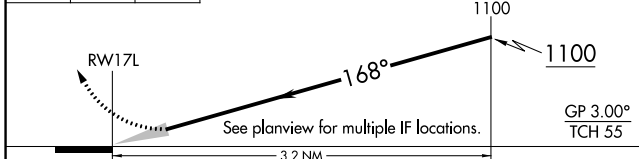
RNP AR APCH-GPS. ▼ For uncompensated Baro-VNAV systems, procedure NA below -2°C or above 54°C. For inop ALS, increase RNP 0.12 all Cats visibility to RVR 4000; increase RNP 0.30 all Cats visibility to RVR 4500.		MALSR 	MISSED APPROACH: Climb to 500 then right turn to 3000 direct GRIME and hold. *Missed approach requires minimum climb of 290 feet per NM to 3000. #Missed approach requires minimum climb of 300 feet per NM to 3000.		
D-ATIS	NORCAL APP CON	CAPITOL TOWER	GND CON	CLNC DEL	CPDLC
126.75	125.4 259.1 (W-NE) 125.25 257.9 (SW) 127.4 317.5 (E-SE)	125.7 256.7	121.7 256.7	121.1 256.7	



SW-2, 13 JUN 2024 to 11 JUL 2024

SW-2, 13 JUN 2024 to 11 JUL 2024

500	3000	GRIME	VGSI and RNAV glidepath not coincident (VGSI Angle 3.00/TCH 64).



CATEGORY	A	B	C	D
RNP 0.12 DA#		277/24	250 (300-½)	
RNP 0.30 DA*		339/24	312 (400-½)	

AUTHORIZATION REQUIRED

TDZ/CL Rwy 17L and 17R
 HIRL Rwy 17R-35L and 17L-35R