
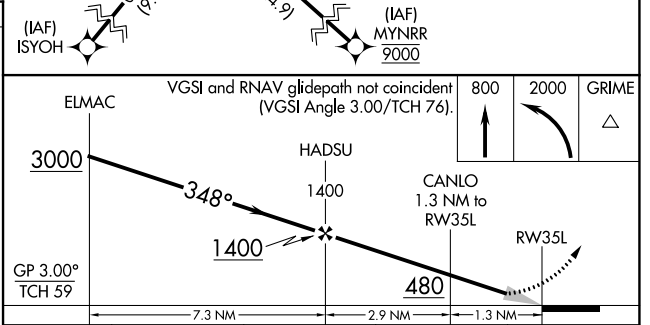
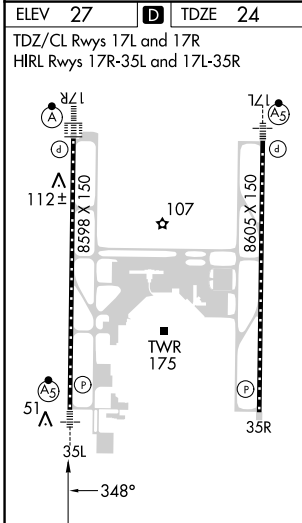
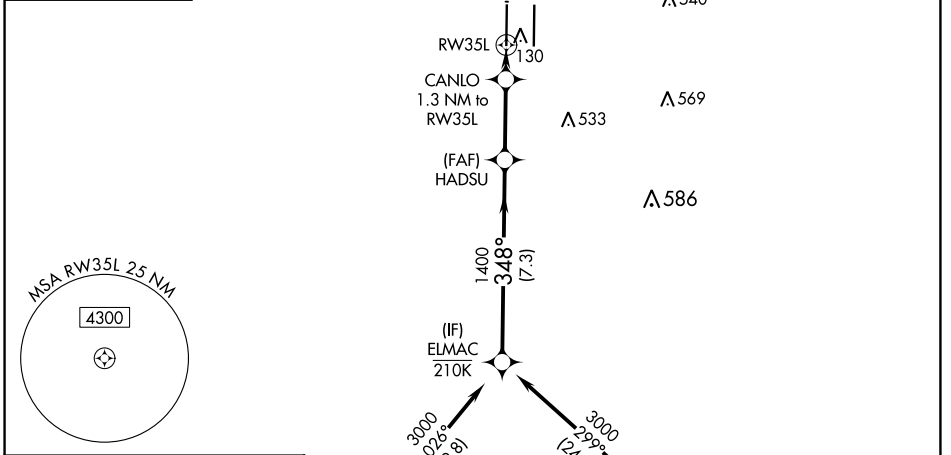
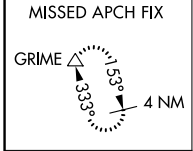


WAAS CH <b>86602</b> <b>W35A</b>	APP CRS <b>348°</b>	Rwy Idg TDZE Apt Elev	<b>8598</b> <b>24</b> <b>27</b>
--	------------------------	-----------------------------	---------------------------------------

# RNAV (GPS) Y RWY 35L

SACRAMENTO INTL (SMF)

RNP APCH-GPS.		CAPITOL TOWER <b>125.7 256.7</b>		GND CON <b>121.7 256.7</b>		CLNC DEL <b>121.1 256.7</b>		CPDLC
▼ Circling NA east of Rwy 17R-35L. For uncompensated Baro-VNAV systems, LNAV/VNAV NA below -2°C or above 54°C. For inop ALS, increase LNAV/VNAV all Cats visibility to RVR 4500 and increase LNAV Cat C/D visibility to RVR 5500. *RVR 1800 authorized with use of FD or AP or HUD to DA.				MALSR 		MISSED APPROACH: Climb to 800 then climbing left turn to 2000 direct GRIME and hold.		



CATEGORY	A	B	C	D
LPV DA*		224/24	200 (200-½)	
LNAV/VNAV DA		311/24	287 (300-½)	
LNAV MDA	380/24	356 (400-½)	380/30	356 (400-⅝)
<input checked="" type="checkbox"/> CIRCLING	440-1 413 (500-1)	480-1 453 (500-1)	480-1½ 453 (500-1½)	580-2 553 (600-2)

SW-2, 13 JUN 2024 to 11 JUL 2024

SW-2, 13 JUN 2024 to 11 JUL 2024