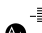

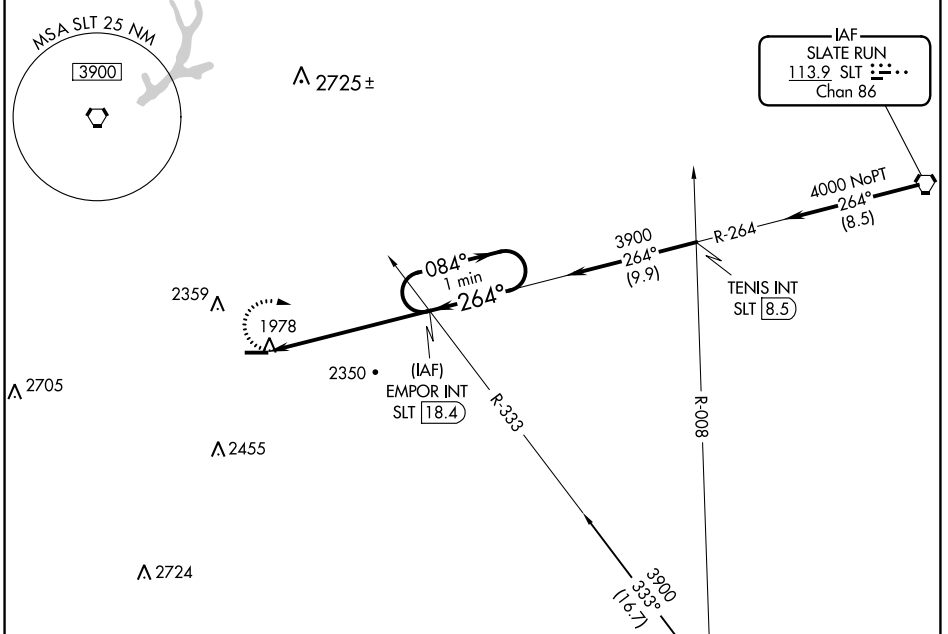


VORTAC SLT <b>113.9</b> Chan <b>86</b>	APP CRS <b>264°</b>	Rwy Idg <b>4300</b> TDZE <b>1934</b> Apt Elev <b>1934</b>
--	------------------------	---

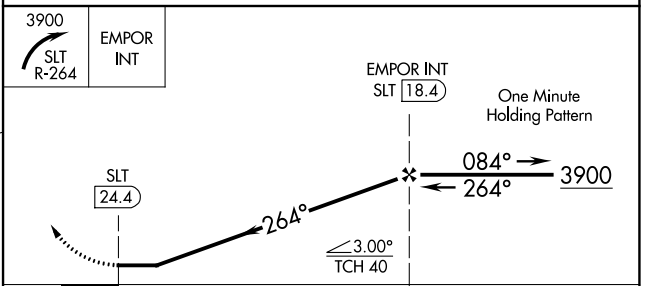
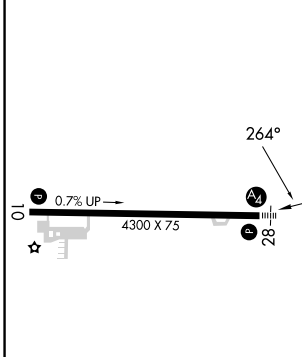
**VOR RWY 28**  
ST MARYS MUNI (OYM)


<p><b>⚠</b> Night landing: Rwy 28 NA. Helicopter visibility reduction below 1 SM NA. When local altimeter setting not received, use Bradford altimeter setting and increase all MDA 240 feet, and S-28 Cat B and Circling Cat B/C visibility ¼ mile and S-28 Cat C/D ½ mile. Inoperative table does not apply to Cats C/D.</p>	<p><b>MALS</b>  </p>	<p><b>MISSED APPROACH:</b> Climbing right turn to 3900 via SLT R-264 to EMPOR INT/18.4 DME and hold.</p>
--	---	--

AWOS-3P <b>118.05</b>	CLEVELAND CENTER <b>126.725 291.65</b>	ALTOONA CLNC DEL <b>122.4</b>	UNICOM <b>122.7 (CTAF)</b> 
--------------------------	---	----------------------------------	---



ELEV 1934	TDZE 1934
-----------	-----------



MIRL Rwy 10-28 					
FAF to MAP 6.1 NM					
Knots	60	90	120	150	180
Min:Sec	6:06	4:04	3:03	2:26	2:02
CATEGORY	A	B	C	D	
S-28	2820-1	886 (900-1)	2820-2½	886 (900-2½)	
CIRCLING	2820-1¼	886 (900-1¼)	2820-2¾	886 (900-2¾)	2820-3 886 (900-3)

NE-4, 13 JUN 2024 to 11 JUL 2024

NE-4, 13 JUN 2024 to 11 JUL 2024