

WAAS CH <b>97525</b> <b>W31A</b>	APP CRS <b>313°</b>	Rwy Idg TDZE <b>725</b> Apt Elev <b>727</b>	<b>4501</b>
--	------------------------	---	-------------

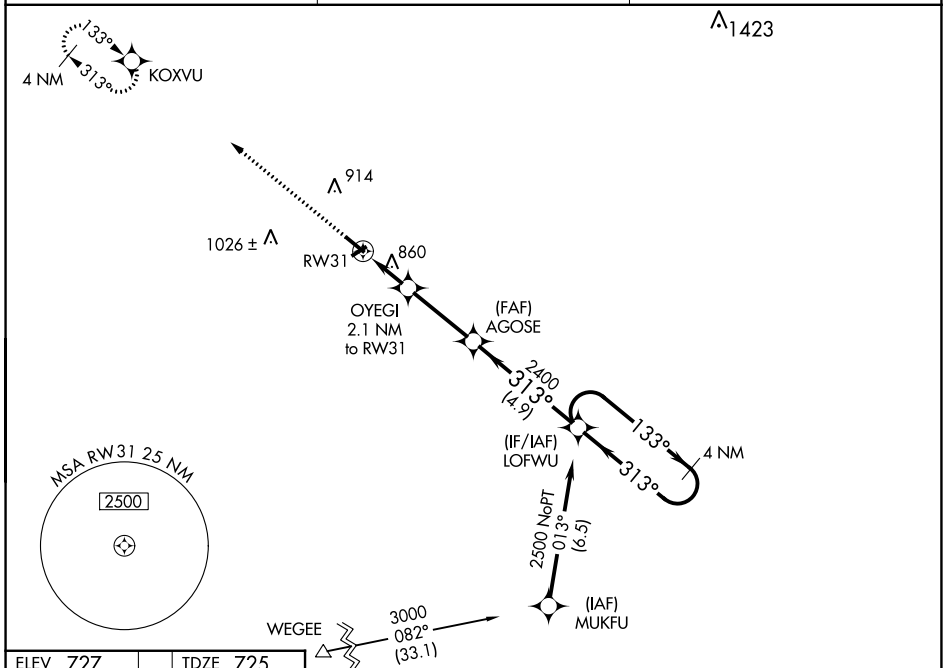
# RNAV (GPS) RWY 31

VIRGIL I GRISSOM MUNI (BFR)

**∇** DME/DME RNP-0.3 NA. When local altimeter setting not received, use Bloomington altimeter setting and increase all MDA 80 feet; increase all Cat C/D visibilities ¼ mile. Procedure NA at night. Helicopter visibility reduction below 1 SM NA.

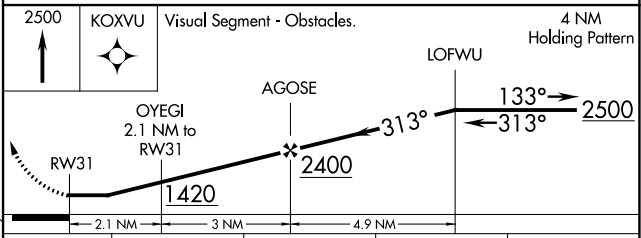
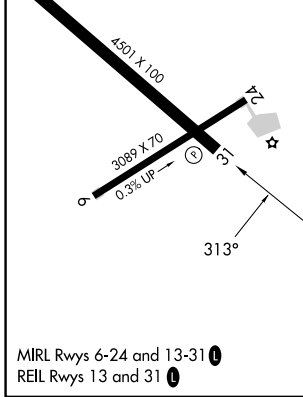
**▲** NA MISSED APPROACH: Climb to 2500 direct KOXVU and hold.

AWOS-3 <b>119.125</b>	INDIANAPOLIS CENTER <b>124.775 269.025</b>	UNICOM <b>122.8 (CTAF) 0</b>
--------------------------	---	---------------------------------



ELEV <b>727</b>	TDZE <b>725</b>
-----------------	-----------------

Procedure NA for arrivals at WESEE on V305 southwest bound.



CATEGORY	A	B	C	D
LP MDA	1160-1	435 (500-1)	1160-1¼	435 (500-1¼)
LNAV MDA	1180-1	455 (500-1)	1180-1⅜	455 (500-1⅜)
<b>C</b> CIRCLING	1220-1 493 (500-1)	1260-1 533 (600-1)	1380-1¼ 653 (700-1¼)	1380-2 653 (700-2)

EC-2, 13 JUN 2024 to 11 JUL 2024

EC-2, 13 JUN 2024 to 11 JUL 2024