

(BEAVY6.BEAVY) 24081

AL-5551 (FAA)

MID-CAROLINA RGNL (RUQ)  
SALISBURY, NORTH CAROLINA

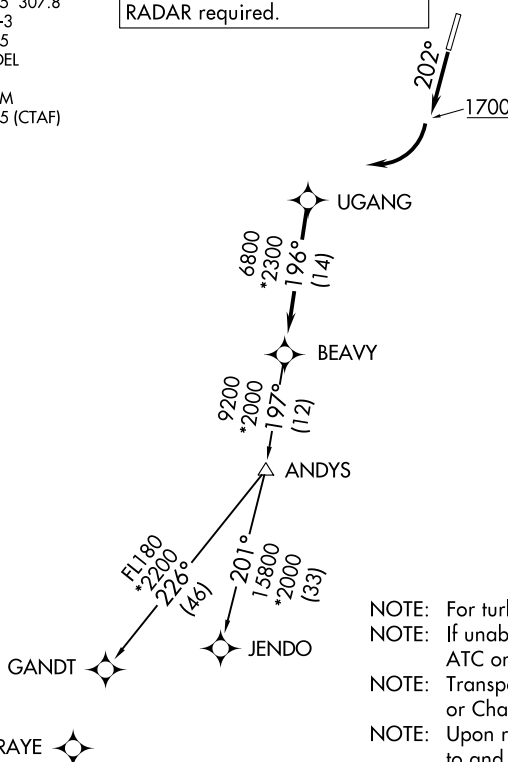
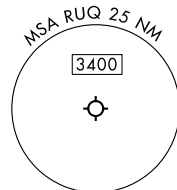
# BEAVY SIX DEPARTURE (RNAV)

CHARLOTTE DEP CON  
128.325 307.8  
AWOS-3  
118.175  
CLNC DEL  
127.35  
UNICOM  
122.725 (CTAF)

RNAV 1-DME/DME/IRU or GPS.

RADAR required.

**TOP ALTITUDE:  
3000**



- NOTE: For turbo jets only.
- NOTE: If unable to accept climb rates, advise ATC on initial contact.
- NOTE: Transponder code will be issued via PDC or Charlotte CLNC DEL.
- NOTE: Upon reaching 10000 MSL, accelerate to and maintain 280K, if unable advise ATC.

### TAKEOFF MINIMUMS

Rwy 2: Standard.

Rwy 20: 400-2 3/4 or standard with minimum climb of 205' per NM to 1300, or alternatively, with standard takeoff minimums and a normal 200' per NM climb gradient, takeoff must occur no later than 1200' prior to DER.

NOTE: Chart not to scale.

### DEPARTURE ROUTE DESCRIPTION

TAKEOFF RUNWAY 2: Climb on heading assigned by ATC, thence...

TAKEOFF RUNWAY 20: Climb on heading 202° to 1700 then on heading assigned by ATC, thence...

...on RADAR vectors to UGANG, then on track 196° to BEAVY. Then on assigned transition. Maintain 3000, expect clearance to filed altitude within 10 minutes after departure.

GANDT TRANSITION (BEAVY6.GANDT)

JENDO TRANSITION (BEAVY6.JENDO)

# BEAVY SIX DEPARTURE (RNAV)

(BEAVY6.BEAVY) 21MAR24

SALISBURY, NORTH CAROLINA  
MID-CAROLINA RGNL (RUQ)

SE-2, 13 JUN 2024 to 11 JUL 2024

SE-2, 13 JUN 2024 to 11 JUL 2024