

(KER4.KER) 24081

KERMIT FOUR DEPARTURE

AL-5551 (FAA)

MID-CAROLINA RGNL (RUQ)
SALISBURY, NORTH CAROLINA

CHARLOTTE DEP CON
128.325 307.8
AWOS-3
118.175
CLNC DEL
127.35
UNICOM
122.725

RADAR and DME required.

**TOP ALTITUDE:
3000**

PULASKI
116.8 PSK
Chan 115

BARRETT'S MOUNTAIN
113.75 BZM
Chan 84(Y)

SUGARLOAF MOUNTAIN
112.2 SUG
Chan 59

CHARLOTTE
115.0 CLT
Chan 97

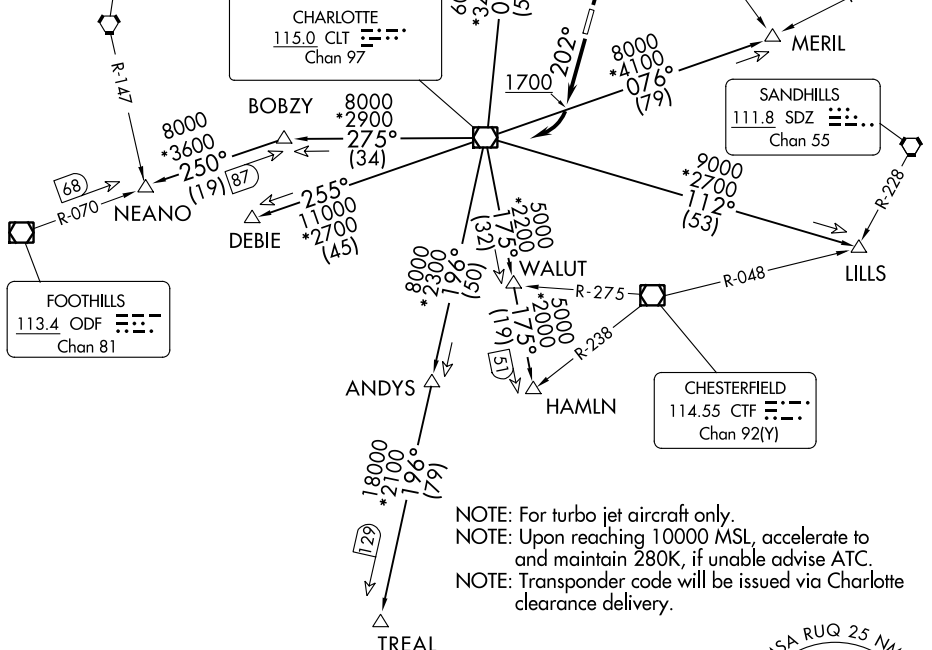
LIBERTY
113.0 LIB
Chan 77

RALEIGH/DURHAM
117.2 RDU
Chan 119

SANDHILLS
111.8 SDZ
Chan 55

CHESTERFIELD
114.55 CTF
Chan 92(Y)

FOOTHILLS
113.4 ODF
Chan 81



NOTE: For turbo jet aircraft only.
 NOTE: Upon reaching 10000 MSL, accelerate to and maintain 280K, if unable advise ATC.
 NOTE: Transponder code will be issued via Charlotte clearance delivery.

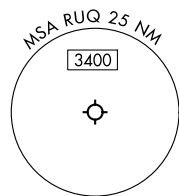
TAKEOFF MINIMUMS

Rwy 2: Standard.

Rwy 20: 400-2¾ or standard with minimum climb of 205' per NM to 1300, or alternatively, with standard takeoff minimums and a normal 200' per NM climb gradient, takeoff must occur no later than 1200' prior to DER.

NOTE: Chart not to scale.

(CONTINUED ON FOLLOWING PAGE)



SE-2, 13 JUN 2024 to 11 JUL 2024

SE-2, 13 JUN 2024 to 11 JUL 2024

KERMIT FOUR DEPARTURE

(KER4.KER) 21MAR24

SALISBURY, NORTH CAROLINA
MID-CAROLINA RGNL (RUQ)