

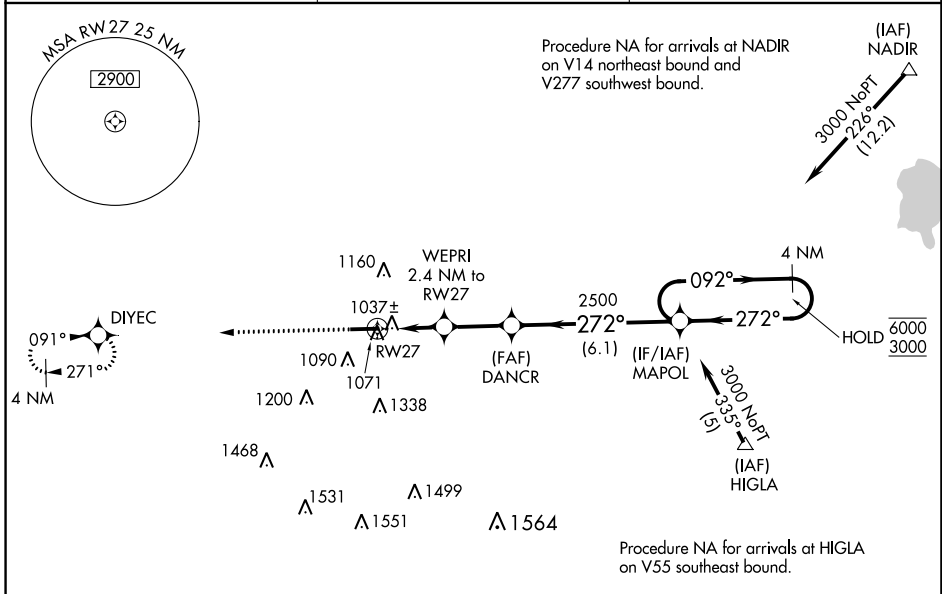
WAAS CH 73025 W27A	APP CRS 272°	Rwy Idg TDZE 925 Apt Elev 925	5505
--	------------------------	---	-------------

RNAV (GPS) RWY 27

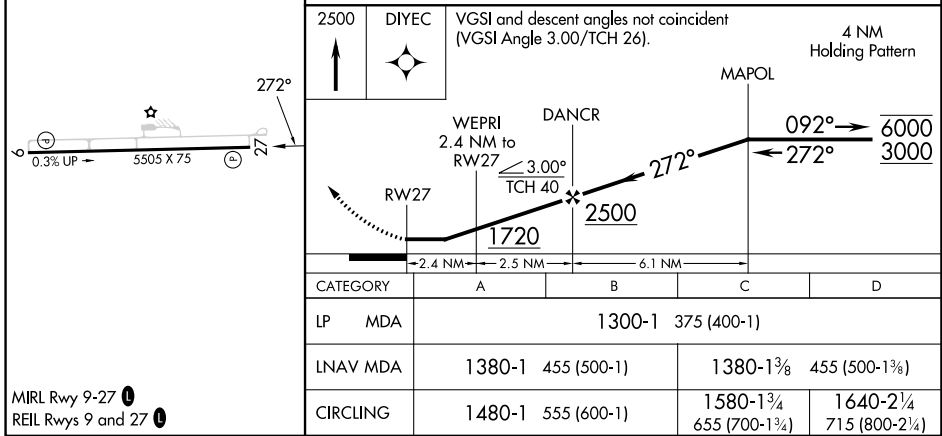
PORTLAND MUNI (PLD)

RNP APCH - GPS.	<p>MISSED APPROACH: Climb to 2500 direct DIYEC and hold.</p>
<p>▼ Rwy 27 helicopter visibility reduction below 1 SM NA. ▲ Straight-in Rwy 27 NA at night, Circling Rwy 27 NA at night.</p>	

AWOS-3 124.675	FORT WAYNE APP CON 132.15 (SE/NE) 284.6 127.2 (SW/NW) 284.6	UNICOM 122.8 (CTAF) 0
--------------------------	---	--



ELEV 925	TDZE 925
----------	----------



PORTLAND, INDIANA
Amdt 2A 25JAN24

40°27'N-85°00'W

PORTLAND MUNI (PLD) RNAV (GPS) RWY 27

EC-2, 13 JUN 2024 to 11 JUL 2024

EC-2, 13 JUN 2024 to 11 JUL 2024