

LOC I-ERV <b>109.1</b>	APP CRS <b>305°</b>	Rwy Idg TDZE Apt Elev	<b>5300</b> <b>1589</b> <b>1617</b>
---------------------------	------------------------	-----------------------------	-------------------------------------------

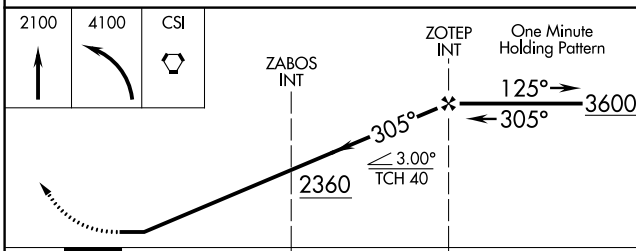
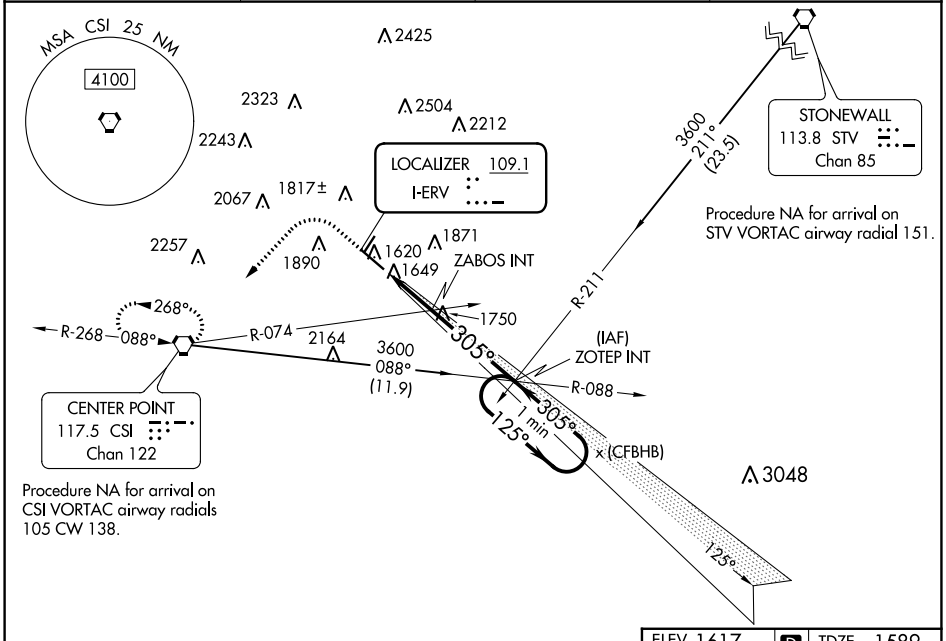
# LOC RWY 30

KERRVILLE MUNI/LOUIS SCHREINER FLD (ERV)

**▼**  
**▲** NA

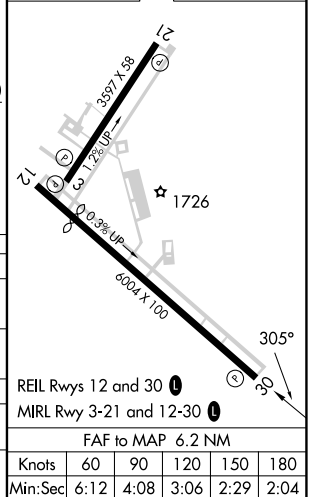
MISSED APPROACH: Climb to 2100 then climbing left turn to 4100 direct CSI VORTAC and hold, continue climb-in-hold to 4100.

AWOS-3 <b>118.125</b>	HOUSTON CENTER <b>134.95 269.4</b>	CLNC DEL <b>134.95</b>	UNICOM <b>122.7 (CTAF)</b> <b>①</b>
--------------------------	---------------------------------------	---------------------------	----------------------------------------



ELEV 1617	<b>D</b>	TDZE 1589
-----------	----------	-----------

CATEGORY	A	B	C	D
S-30	2360-1 771 (800-1)	2360-1¼ 771 (800-1¼)	2360-2½ 771 (800-2½)	771 (800-2½)
<b>C</b> CIRCLING	2360-1 743 (800-1)	2360-1¼ 743 (800-1¼)	2380-2½ 763 (800-2½)	2540-3 923 (1000-3)
ZABOS FIX MINIMUMS (DUAL VOR RECEIVERS REQUIRED)				
S-30	1900-1 311 (300-1)			
<b>C</b> CIRCLING	2260-1 643 (700-1)	2340-1 723 (800-1)	2380-2¼ 763 (800-2¼)	2540-3 923 (1000-3)



# LOC RWY 30

SC-3, 13 JUN 2024 to 11 JUL 2024

SC-3, 13 JUN 2024 to 11 JUL 2024