

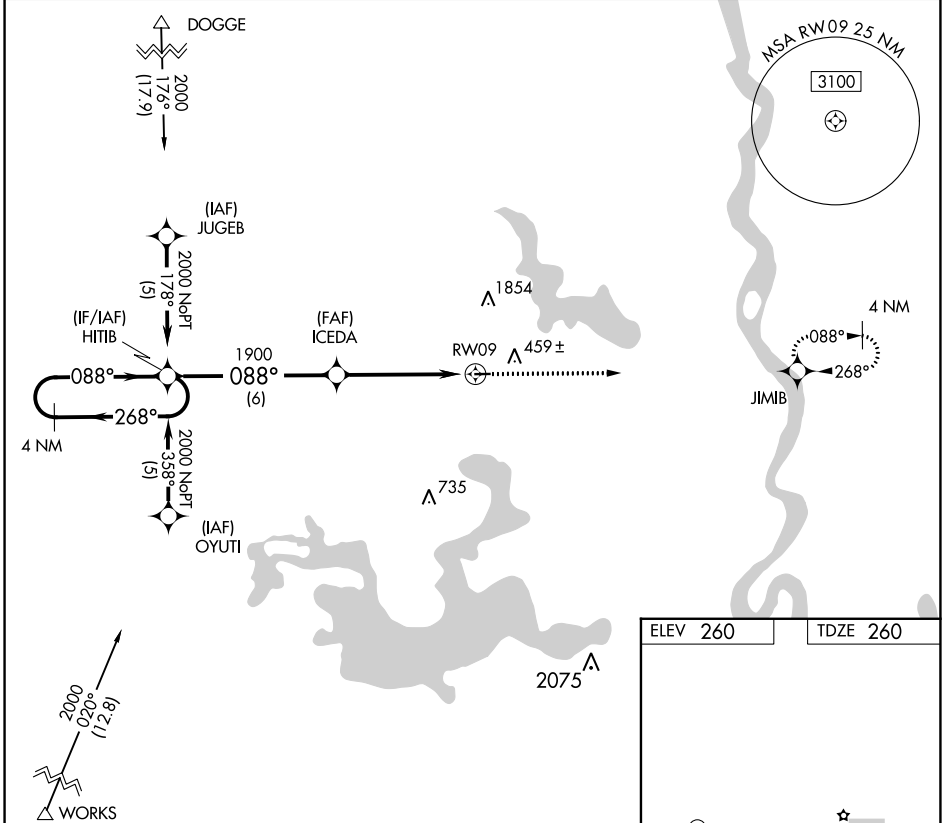
APP CRS	Rwy Idg	<b>2998</b>
<b>088°</b>	TDZE	<b>260</b>
	Apt Elev	<b>260</b>

# RNAV (GPS) RWY 9

VIVIAN (3F4)

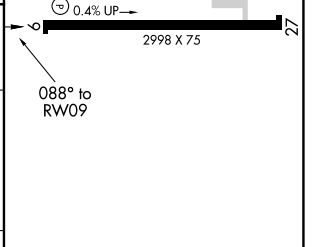
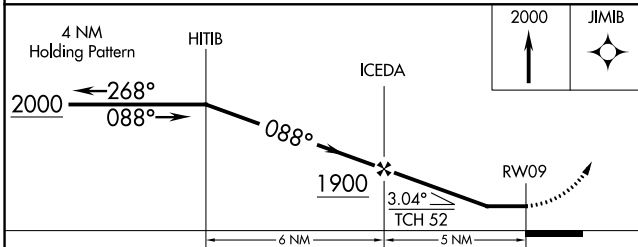
RNP APCH.	MISSED APPROACH: Climb to 2000 direct JIMB and hold.
▼ Use Shreveport Rgnl altimeter setting; when not received, use Shreveport Downtown altimeter setting. Procedure NA at night. Rwy 9 helicopter visibility reduction below 1 SM NA. ▲ NA	

SHREVEPORT APP CON <b>119.9 335.55</b>	GCO <b>135.075</b>	UNICOM <b>122.8 (CTAF) 0</b>
---	-----------------------	---------------------------------



SC-4, 13 JUN 2024 to 11 JUL 2024

SC-4, 13 JUN 2024 to 11 JUL 2024



CATEGORY	A	B	C	D
LNAV MDA	860-1	600 (600-1)	860-1 <sup>3</sup> / <sub>4</sub> 600 (600-1 <sup>3</sup> / <sub>4</sub> )	NA

MIRL Rwy 9-27	0
REIL Rwy 9	0
REIL Rwy 27	