

| | | |
|-------------|----------|-------------|
| APP CRS | Rwy Idg | 4099 |
| 295° | TDZE | 777 |
| | Apt Elev | 790 |

RNAV (GPS) RWY 29

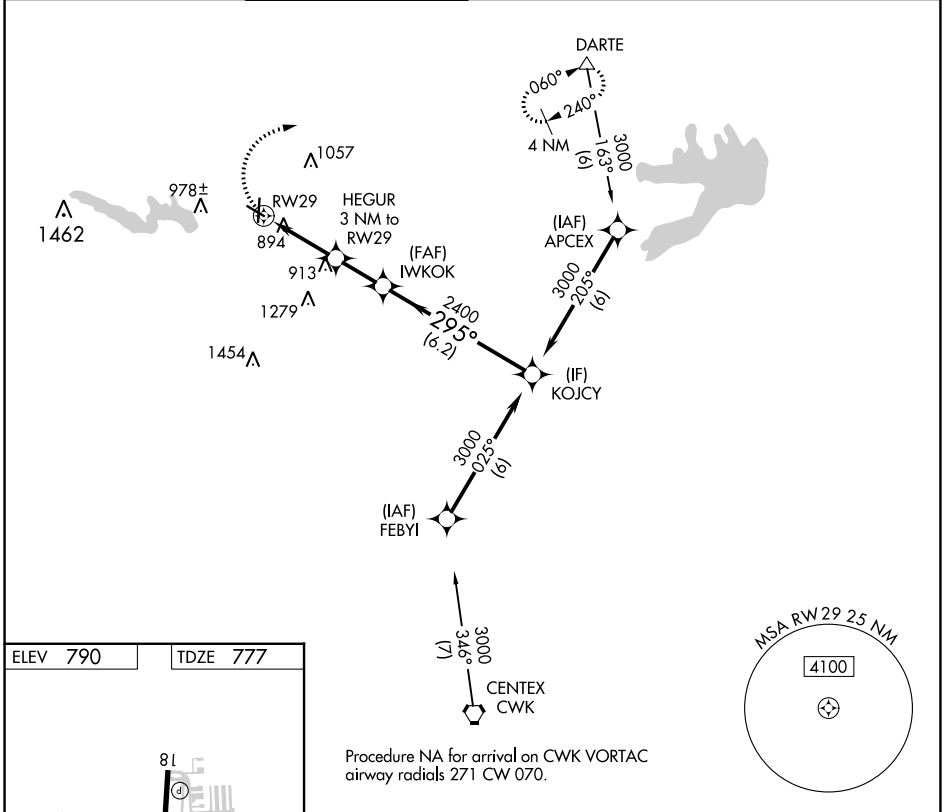
GEORGETOWN EXEC (GTU)

RNP APCH.

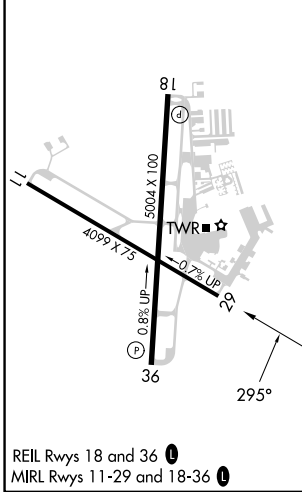
▼ Rwy 29 helicopter visibility reduction below 3/4 SM NA. VDP NA when using Skylark Field altimeter setting. When local altimeter setting not received, use Skylark Field altimeter setting and increase all MDA 80 feet increase LNAV and Circling Cat C/D visibility 1/4 SM.

MISSED APPROACH: Climbing right turn to 3000 direct DARTE and hold.

| | | | | | | |
|--------------|---------------------|-------------------------|----------------|----------------|-----------------------------------|--------------|
| ATIS | AUSTIN APP CON | GEORGETOWN TOWER * | GND CON | CLNC DEL | CLNC DEL | UNICOM |
| 118.6 | 119.0 370.85 | 120.225 (CTAF) 0 | 119.125 | 119.125 | 121.1 (when twr closed) | 123.0 |



| | |
|----------|----------|
| ELEV 790 | TDZE 777 |
|----------|----------|



| | | | | | |
|----------|-----------------------|-----------------------|-------------------------------|-------------------------------|--------|
| 3000 | DARTE | HEGUR 3 NM to RW29 | IWKOK | KOJCY | |
| | △ | 1.2 NM to RW29 | 3.04° TCH 40 | 3000 | |
| | | 1760 | 2400 | 295° | |
| | | 1.2 | 1.8 | 2 NM | 6.2 NM |
| CATEGORY | A | B | C | D | |
| LNAV MDA | 1220-1 | 443 (500-1) | 1220-1 3/8 | 443 (500-1 3/8) | |
| CIRCLING | 1240-1 450 (500-1) | 1340-1 550 (600-1) | 1360-1 1/2 570 (600-1 1/2) | 1640-2 3/4 850 (900-2 3/4) | |

SC-3, 13 JUN 2024 to 11 JUL 2024

SC-3, 13 JUN 2024 to 11 JUL 2024