

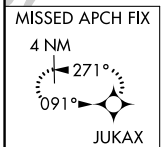
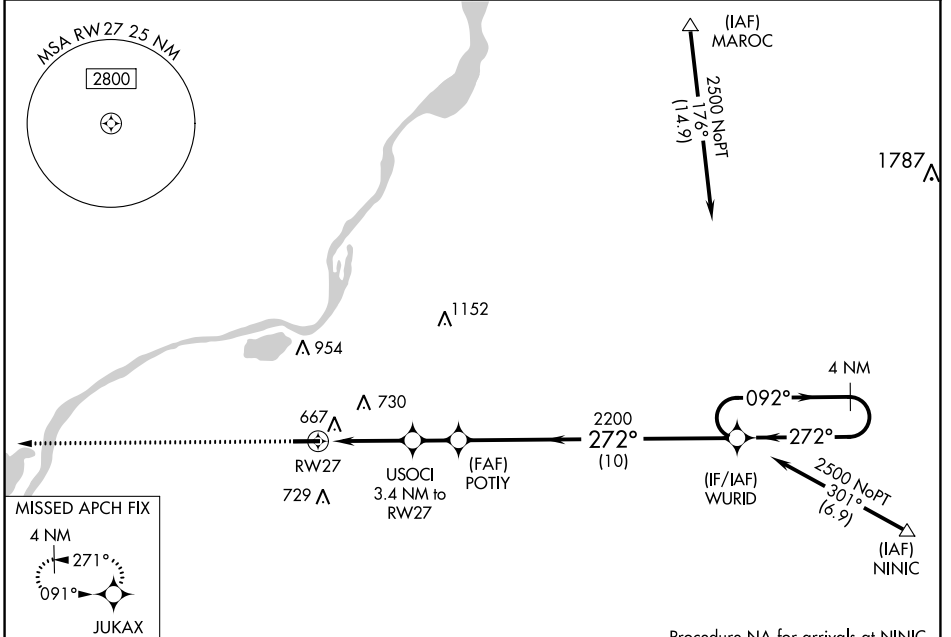
WAAS CH <b>99509</b> <b>W27A</b>	APP CRS <b>272°</b>	Rwy Idg TDZE <b>5000</b> <b>525</b> Apt Elev <b>530</b>
--	------------------------	--

# RNAV (GPS) RWY 27

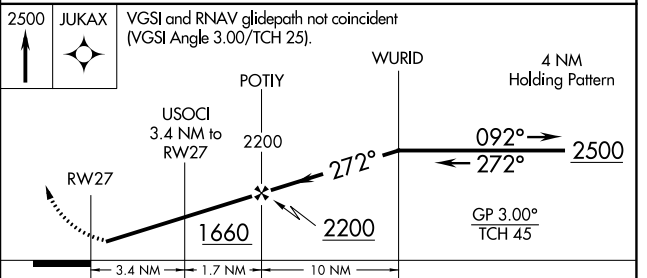
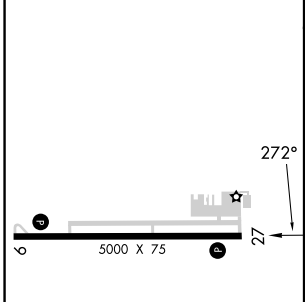
PEKIN MUNI (C15)

RNP APCH-GPS	Baro-VNAV NA. Rwy 27 helicopter visibility reduction below 1 SM NA. Use General Downing - Peoria Intl altimeter setting: when not received use Lincoln altimeter setting; increase LPV DA to 889 feet; increase LNAV/VNAV DA to 1035 feet; increase all MDAs 40 feet and LNAV visibility Cat C/D 1/8 SM and Circling visibility Cat C 1/4 SM.	MISSED APPROACH: Climb to 2500 direct JUKAX and hold.
--------------	---	---

SAINT LOUIS APP CON <b>125.8 269.2</b>	UNICOM <b>122.8 (CTAF) 0</b>
---	---------------------------------



ELEV <b>530</b>	TDZE <b>525</b>
-----------------	-----------------



CATEGORY	A	B	C	D
LPV DA		864-1	339 (400-1)	
LNAV/VNAV DA		1010-1 3/8	485 (500-1 3/8)	
LNAV MDA	1020-1	495 (500-1)	1020-1 3/8	495 (500-1 3/8)
CIRCLING	1060-1	530 (600-1)	1100-1 1/2 570 (600-1 1/2)	1360-2 3/4 830 (900-2 3/4)

REIL Rwy 9 and 27 0  
MIRL Rwy 9-27 0

EC-3, 13 JUN 2024 to 11 JUL 2024

EC-3, 13 JUN 2024 to 11 JUL 2024