

WAAS CH <b>93630</b> <b>W18A</b>	APP CRS <b>179°</b>	Rwy Idg <b>4002</b> TDZE <b>538</b> Apt Elev <b>538</b>
--	------------------------	---

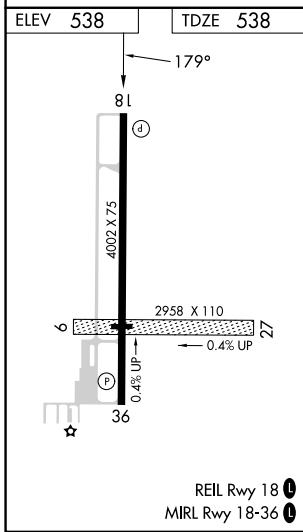
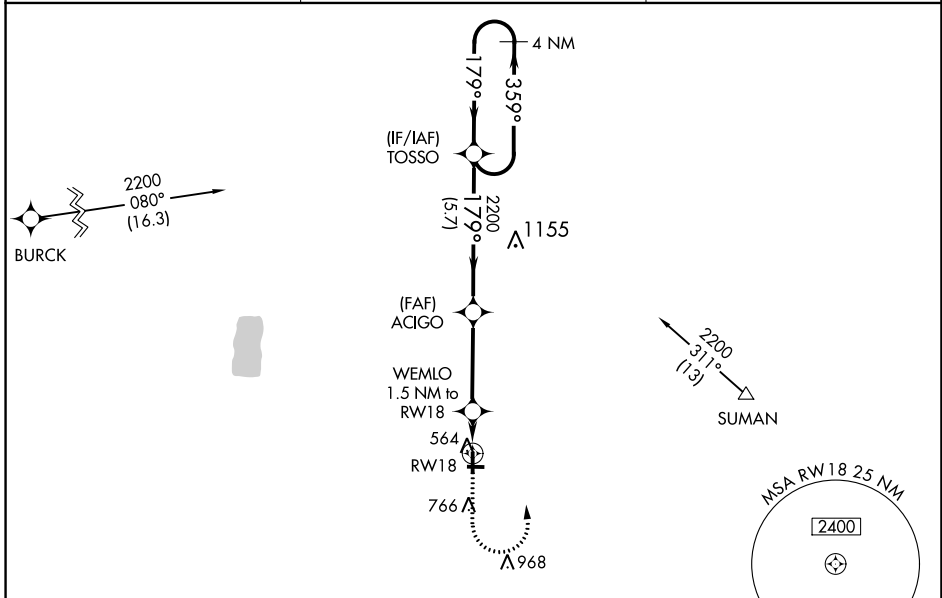
# RNAV (GPS) RWY 18

SPARTA COMMUNITY-HUNTER FLD (SAR)

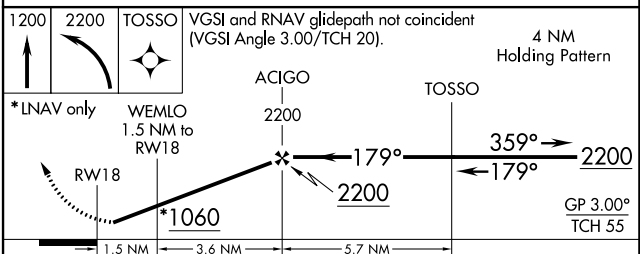
**⚠ NA** Baro-VNAV NA when using Scott AFB/Midamerica St Louis altimeter setting. For uncompensated Baro-VNAV systems, LNAV/VNAV NA below -16°C (4°F) or above 54°C (130°F). DME/DME RNP-0.3 NA. Helicopter visibility reduction below ¾ SM NA. When local altimeter setting not received, use Scott AFB/Midamerica St Louis altimeter setting and increase all DA 68 feet and all MDA 80 feet, increase LNAV and circling Cat C/D visibility ¼ mile. Circling NA to Rwy 9/27.

**MISSED APPROACH:** Climb to 1200 then climbing left turn to 2200 direct TOSSO and hold.

AWOS-3PT <b>118.375</b>	ST. LOUIS APP CON <b>125.2 281.5</b>	UNICOM <b>123.075 (CTAF) 0</b>
----------------------------	---	-----------------------------------



Limit missed approach to 250K.



CATEGORY	A	B	C	D
LPV DA		788-1	250 (300-1)	
LNAV/VNAV DA		788-1	250 (300-1)	
LNAV MDA		880-1	342 (400-1)	
CIRCLING	980-1 442 (500-1)	1140-1 602 (700-1)	1140-1¾ 602 (700-1¾)	1320-2½ 782 (800-2½)