

WAAS CH 63102 W18A	APP CRS 180°	Rwy Idg TDZE Apt Elev	6498 3062 3062
--	------------------------	-----------------------------	---

RNAV (GPS) RWY 18

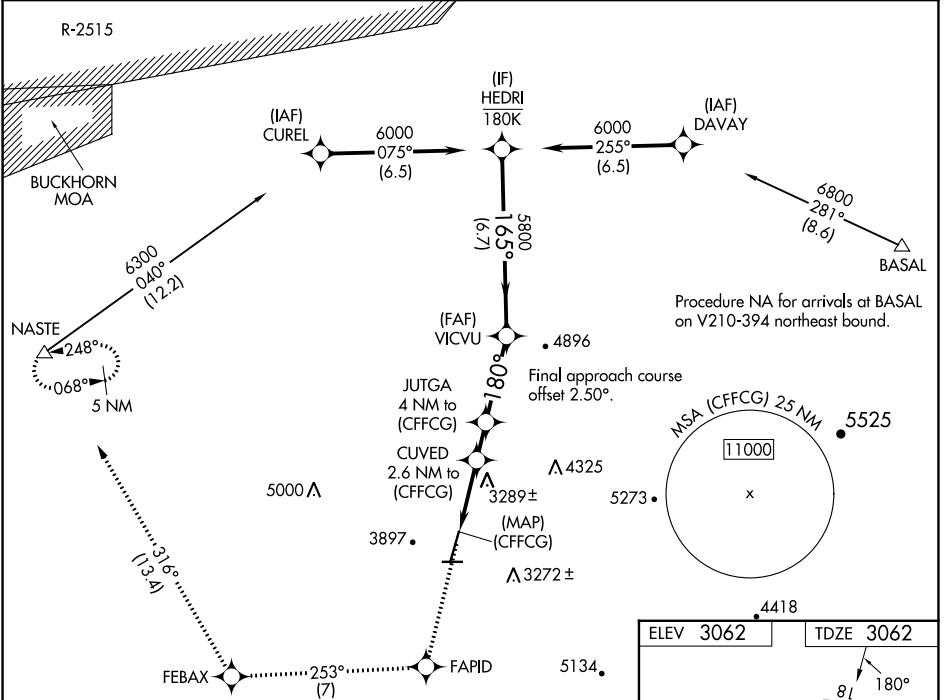
APPLE VALLEY (APV)

RNP APCH.

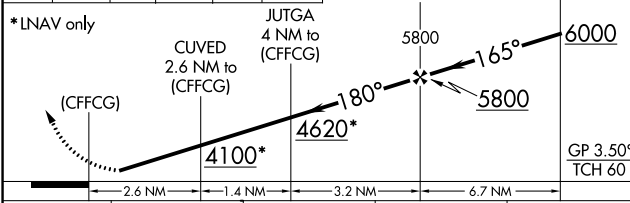
▼ Circling NA to Rwy 8 and 26. Circling to Rwy 36 NA at night.
 ▲ NA Rwy 18 helicopter visibility reduction below 3/4 SM NA. Use Victorville altimeter setting; if not received, procedure NA.

MISSED APPROACH: Climb to 6000 direct FAPID and track 253° to FEBAX and track 316° to NASTE and hold.

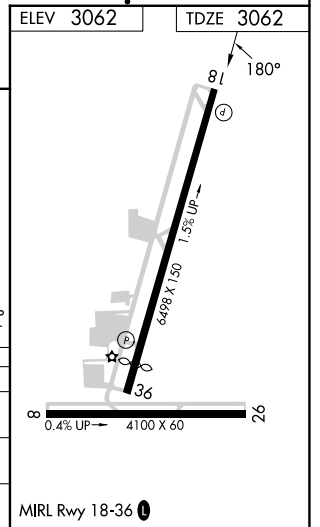
VCV AWOS-3 135.475	JOSHUA APP CON 124.55 363.0	AUNICOM 122.8 (CTAF) 0
------------------------------	---------------------------------------	----------------------------------



6000	FAPID	tr 253°	FEBAX	tr 316°	NASTE	VGSI and RNAV glidepath not coincident (VGSI Angle 3.50/TCH 49).
------	-------	---------	-------	---------	-------	--



CATEGORY	A	B	C	D
LPV DA	3380-7/8		318 (400-7/8)	
LNAV MDA	3600-1	538 (600-1)	3600-1 1/2	538 (600-1 1/2)
CIRCLING	4220-1 1/4 1158 (1200-1 1/4)	4440-1 1/2 1378 (1400-1 1/2)	4740-3	1678 (1700-3)



SW-3, 13 JUN 2024 to 11 JUL 2024

SW-3, 13 JUN 2024 to 11 JUL 2024