

WAAS CH 53437 W14A	APP CRS 139°	Rwy ldg TDZE 30 Apt Elev 32	5004
--	------------------------	---	-------------

RNAV (GPS) RWY 14

CALHOUN COUNTY (PKV)

RNP APCH - GPS.

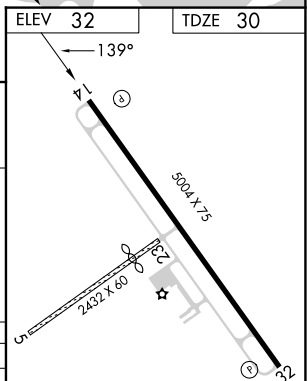
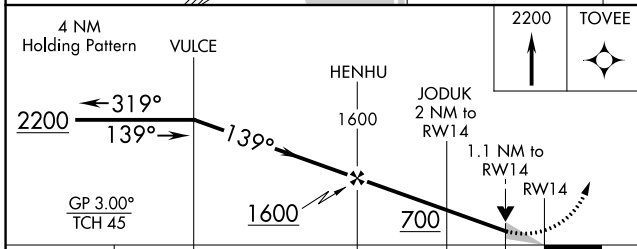
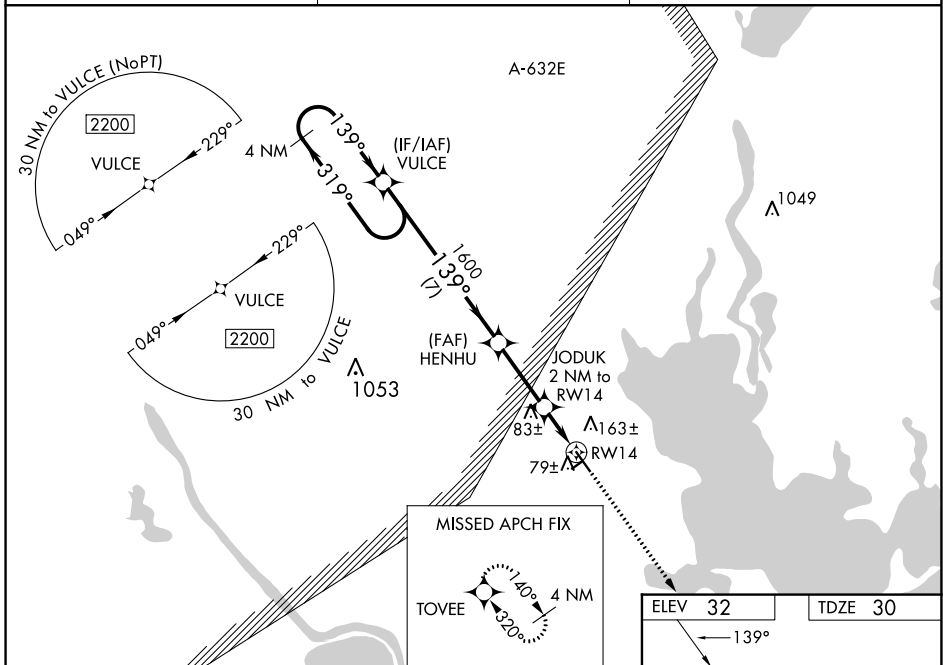
⚠ Baro-VNAV and VDP NA when using Victoria altimeter setting. For uncompensated Baro-VNAV systems, LNAV/VNAV NA below -15°C or above 54°C. When local altimeter setting not received, use Victoria altimeter setting and increase LPV DA and LNAV/VNAV DA to 331 feet and all visibilities 1/8 SM; increase all MDAs 60 feet and LNAV visibility Cat C 1/4 SM. Circling Rwy 32 NA at night. Circling NA to Rwys 5 and 23.

MISSED APPROACH:
Climb to 2200 direct TOVEE and hold.

AWOS-3
118.275

HOUSTON CENTER
135.05 353.6

UNICOM
122.8 (CTAF) 0



		7 NM		2.8 NM	0.9 NM	1.1	
CATEGORY	A	B		C		D	
LPV DA		280-3/4		250 (300-3/4)		NA	
LNAV/VNAV DA		280-3/4		250 (300-3/4)		NA	
LNAV MDA	440-1	410 (500-1)		440-1/8 410 (500-1/8)		NA	
C CIRCLING	520-1	488 (500-1)		560-1/2 528 (600-1/2)		NA	

MIRL Rwy 14-32 0

SC-5, 13 JUN 2024 to 11 JUL 2024

SC-5, 13 JUN 2024 to 11 JUL 2024