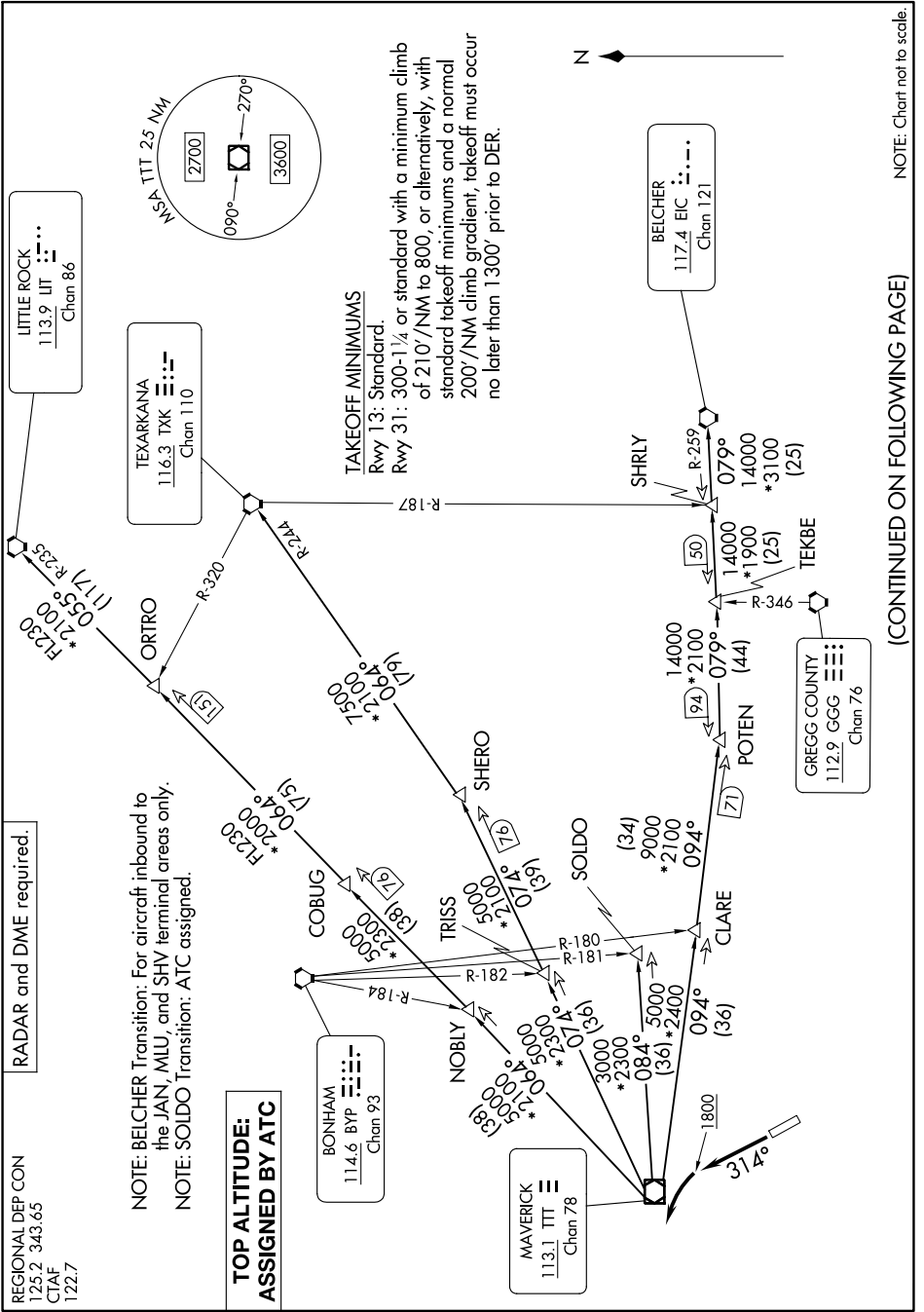


# DALLAS THREE DEPARTURE

SC-2, 13 JUN 2024 to 11 JUL 2024



REGIONAL DEP CON  
125.2 343.65  
CTAF  
122.7

NOTE: BELCHER Transition: For aircraft inbound to the JAN, MLU, and SHV terminal areas only.  
NOTE: SOLDO Transition: ATC assigned.

NOTE: BELCHER Transition: For aircraft inbound to the JAN, MLU, and SHV terminal areas only.  
NOTE: SOLDO Transition: ATC assigned.

**TOP ALTITUDE:  
ASSIGNED BY ATC**

**TAKEOFF MINIMUMS**  
Rwy 13: Standard.  
Rwy 31: 300-1¼ or standard with a minimum climb of 210'/NM to 800, or alternatively, with standard takeoff minimums and a normal 200'/NM climb gradient, takeoff must occur no later than 1300' prior to DER.

**RADAR and DME required.**

(CONTINUED ON FOLLOWING PAGE)

NOTE: Chart not to scale.

SC-2, 13 JUN 2024 to 11 JUL 2024

# DALLAS THREE DEPARTURE