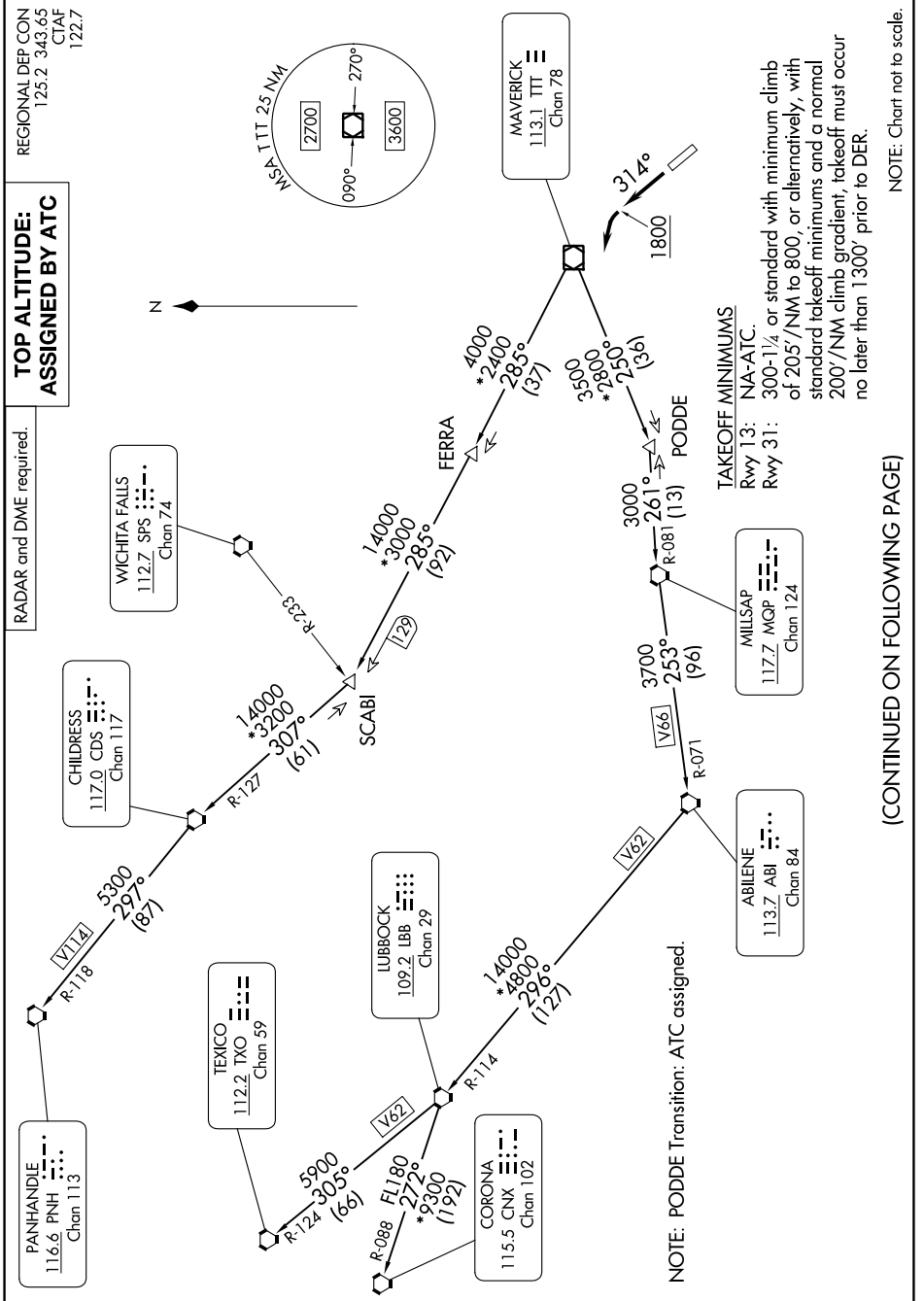


# WORTH ONE DEPARTURE

SC-2, 13 JUN 2024 to 11 JUL 2024



**TOP ALTITUDE:  
ASSIGNED BY ATC**

RADAR and DME required.

REGIONAL DEP CON  
125.2 343.65  
CTAF  
122.7

CHILDRESS  
117.0 CDS  
Chan 117

WICHITA FALLS  
112.Z SPS  
Chan 74

TEXICO  
112.2 TXO  
Chan 59

LUBBOCK  
109.2 LBB  
Chan 29

CORONA  
115.5 CNX  
Chan 102

MILLSAP  
117.Z MOP  
Chan 124

ABILENE  
113.7 ABI  
Chan 84

MAVERICK  
113.1 TTT  
Chan 78

**TAKEOFF MINIMUMS**  
Rwy 13: NA-ATC.  
300-1/4 or standard with minimum climb  
of 205'/NM to 800, or alternatively, with  
standard takeoff minimums and a normal  
200'/NM climb gradient, takeoff must occur  
no later than 1300' prior to DER.

NOTE: PODDE Transition: ATC assigned.

NOTE: Chart not to scale.

(CONTINUED ON FOLLOWING PAGE)

SC-2, 13 JUN 2024 to 11 JUL 2024

# WORTH ONE DEPARTURE