

WAAS CH 56607 W34A	APP CRS 338°	Rwy Idg TDZE Apt Elev	5001 1069 1069
--	------------------------	-----------------------------	---

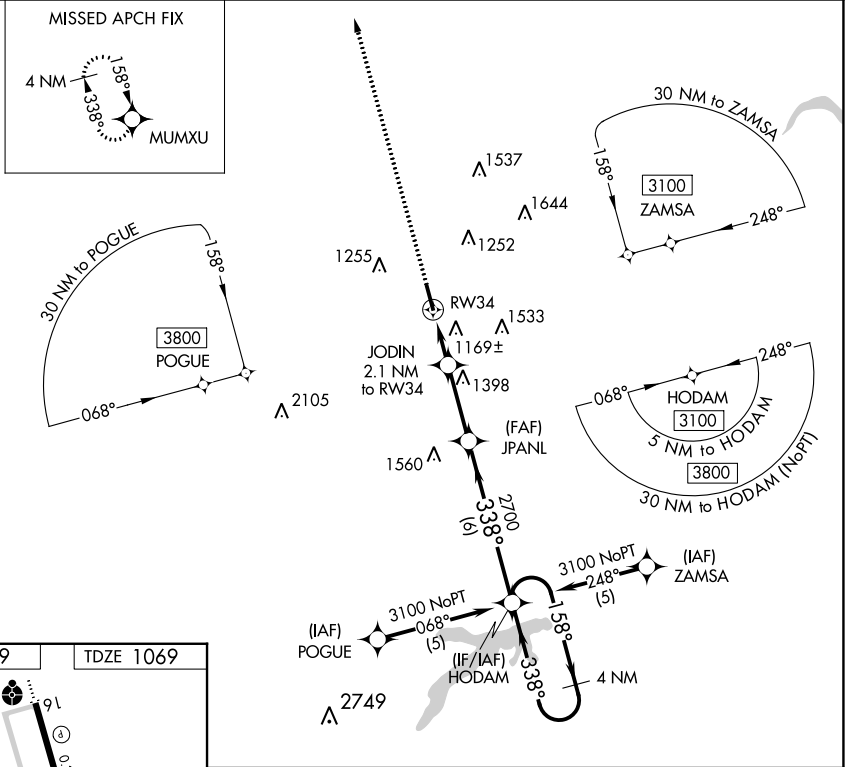
RNAV (GPS) RWY 34

GUTHRIE/EDMOND RGNL (GOK)

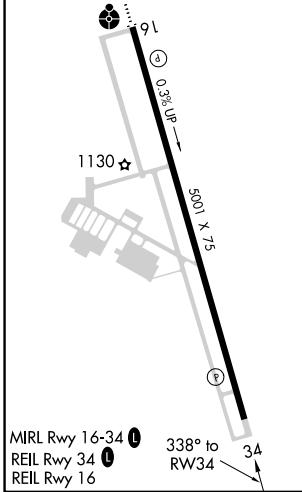
▼ DME/DME RNP-0.3 NA. VDP NA when using Will Rogers World altimeter setting. When local altimeter setting not received, use Will Rogers World altimeter setting and increase DA/MDA 100 feet and LPV all Cats visibility 1/4 mile.

▲ MISSED APPROACH: Climb to 3100 direct MUMXU and hold.

ASOS 133.975	OKE CITY APP CON 124.2 336.4	UNICOM 122.8 (CTAF) 1
------------------------	--	--



ELEV 1069	TDZE 1069
-----------	-----------



3100	MUMXU	JODIN 2.1 NM to RW34	JPANL	HODAM	4 NM Holding Pattern
↑	◆				
*LNAV only.					
	*1 NM to RW34				
RW34	1760*	2700	338°	3100	GP 3.00° TCH 45
1 NM	1.1 NM	2.8 NM	6 NM		
CATEGORY	A	B	C	D	
LPV DA	1319-1	250 (300-1)			NA
LNAV MDA	1420-1	351 (400-1)			NA
CIRCLING	1540-1 471 (500-1)	1560-1 491 (500-1)			NA

SC-1, 13 JUN 2024 to 11 JUL 2024

SC-1, 13 JUN 2024 to 11 JUL 2024