

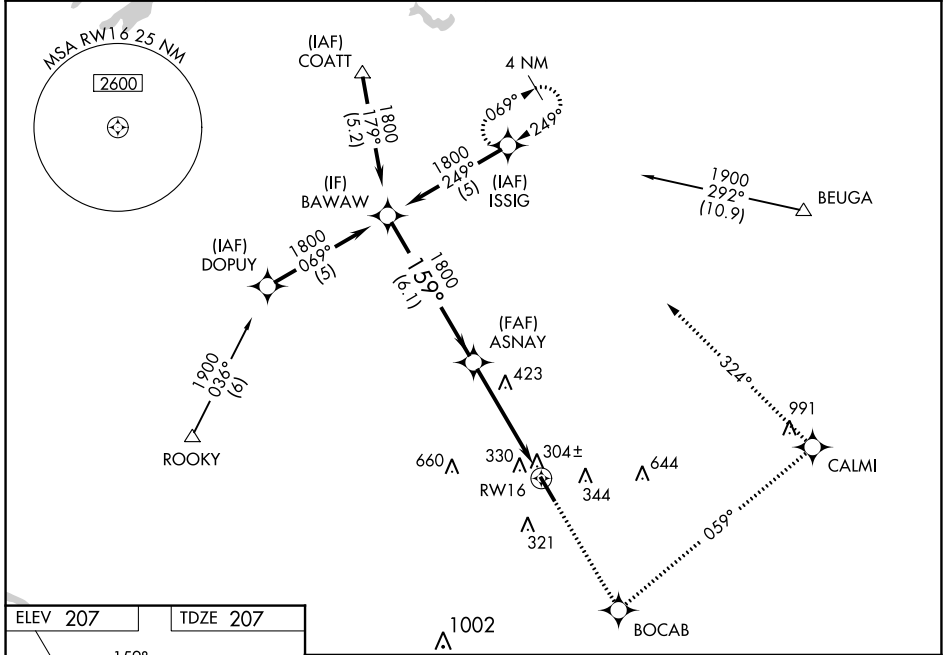
WAAS CH 42904 W16A	APP CRS 159°	Rwy ldg TDZE Apt Elev	5402 207 207
--	------------------------	-----------------------------	---

RNAV (GPS) RWY 16

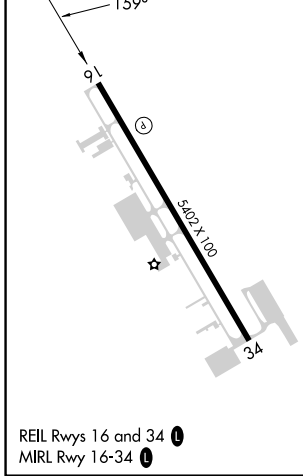
HANOVER COUNTY MUNI (OFP)

RNP APCH.	MISSED APPROACH: Climb to 2000 direct BOCAB and left turn via 059° track to CALMI and left turn via 324° track to ISSIG and hold.
<p>⚠ When local altimeter setting not received, use Richmond Intl altimeter setting and increase all DA 37 feet and all MDA 40 feet; increase LNAV/VNAV all Cats and LNAV Cats C/D visibility ¼ mile. Baro-VNAV NA when using Richmond Intl altimeter setting. For uncompensated Baro-VNAV systems LNAV/VNAV NA below -15°C or above 54°C. Rwy 16 helicopter visibility reduction below ¾ SM NA.</p>	

ASOS 119.025	POTOMAC APP CON 126.75 307.2	CLNC DEL 125.4	UNICOM 122.7 (CTAF) 0
------------------------	--	--------------------------	---------------------------------



ELEV 207	TDZE 207
-----------------	-----------------



BAWAW Procedure Turn NA 1800 GP 3.00° TCH 40	2000	BOCAB	↙ tr 059°	CALMI	↙ tr 324°	ISSIG	
	ASNAY VGSI and RNAV glidepath not coincident (VGSI Angle 3.00/TCH 40).						
6.1 NM		4.8 NM				RWY 16	
CATEGORY	A	B	C	D			
LPV DA	535-1 ¼ 328 (400-1 ¼)						
LNAV/VNAV DA	564-1 ¼ 357 (400-1 ¼)						
LNAV MDA	700-1	493 (500-1)	700-1 ¼	493 (500-1 ¼)	700-1 ½	493 (500-1 ½)	
C CIRCLING	700-1	493 (500-1)	900-2	693 (700-2)	1020-2 ¾	813 (900-2 ¾)	

NE-3, 13 JUN 2024 to 11 JUL 2024

NE-3, 13 JUN 2024 to 11 JUL 2024