

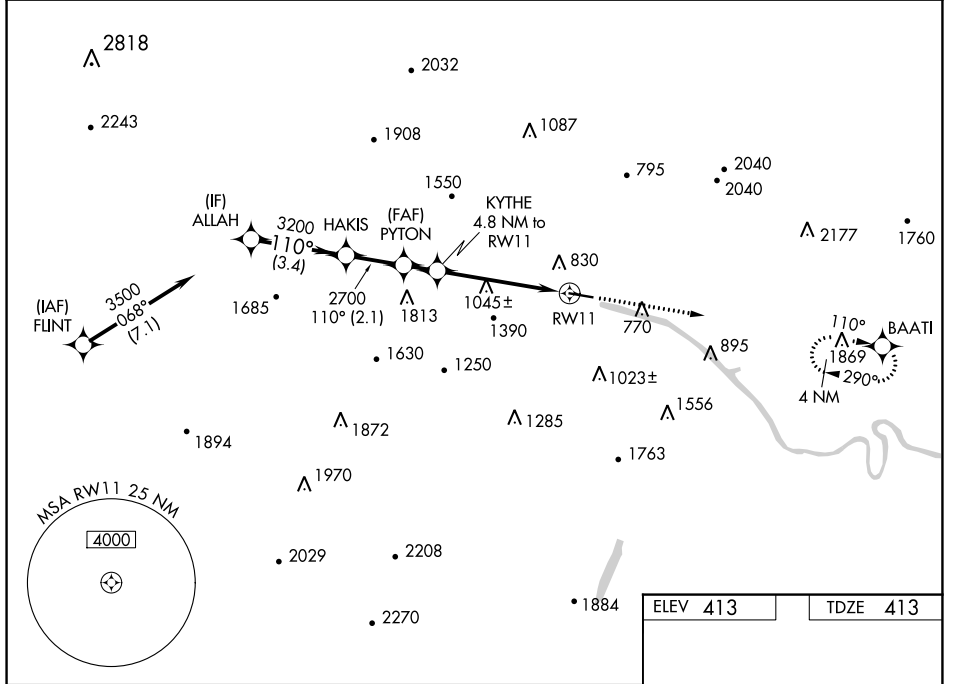
WAAS CH 63239 W11A	APP CRS 110°	Rwy Idg TDZE 4979 Apt Elev 413
--	------------------------	--

RNAV (GPS) RWY 11

POTOMAC AIRPARK (W35)

RNP APCH.	<p>▼ Procedure NA at night. Rwy 11 helicopter visibility reduction below 1 SM NA. Obtain local altimeter setting on CTAF; when not received, use Martinsburg altimeter setting and increase all MDAs 80 feet and increase LNAV and LP Cat B, C and D visibilities ½ SM and increase Circling Cat B visibility ¼ SM.</p> <p>▲ NA MISSED APPROACH: Climb to 3500 direct BAATI and hold.</p>
-----------	---

POTOMAC APP CON 126.825 239.025	CTAF 122.9
---	----------------------



	Visual Segment - Obstacles.		3500	BAATI
	ALLAH	HAKIS	PYTON	KYTHE 4.8 NM to RW11
	3500	3200	2700	2240
	3.4 NM	2.1 NM	1.2 NM	4.8 NM
CATEGORY	A	B	C	D
LP MDA	1300-1¼	887 (900-1¼)	1300-2½	887 (900-2½)
LNAV MDA	1340-1¼	927 (1000-1¼)	1340-2½	927 (1000-2½)
CIRCLING	1340-1¼	927 (1000-1¼)	1700-3 1287 (1300-3)	1780-3 1367 (1400-3)
	MRL Rwy 11-29			

NE-4, 13 JUN 2024 to 11 JUL 2024

NE-4, 13 JUN 2024 to 11 JUL 2024