

SWABR ONE DEPARTURE (RNAV)

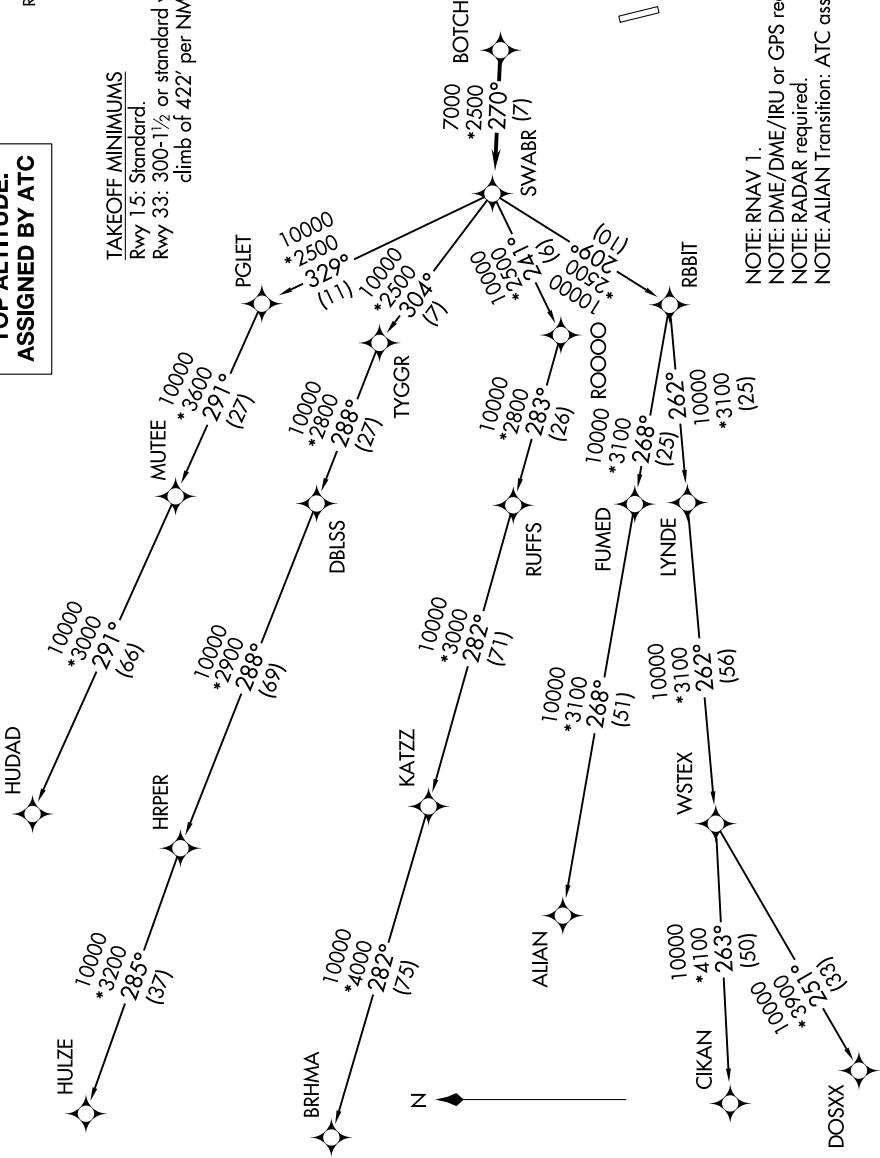
CLEBURNE, TEXAS

SC-2, 13 JUN 2024 to 11 JUL 2024

CTAF
1228
REGIONAL DEP CON
135.975 379.9

TOP ALTITUDE: ASSIGNED BY ATC

TAKEOFF MINIMUMS
Rwy 15: Standard.
Rwy 33: 300-1½ or standard with minimum
climb of 422' per NM to 1200.



NOTE: RNAV 1.
 NOTE: DME/DME/IRU or GPS required.
 NOTE: RADAR required.
 NOTE: ALIAN Transition: ATC assigned only.

NOTE: Chart not to scale.

(NARRATIVE ON FOLLOWING PAGE)

SC-2, 13 JUN 2024 to 11 JUL 2024

SWABR ONE DEPARTURE (RNAV)

CLEBURNE, TEXAS