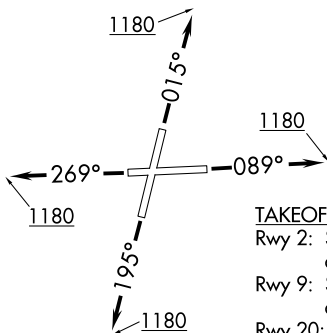


# ADELL SIX DEPARTURE (RNAV)

D-ATIS  
126.675  
GND CON  
120.425  
LEWIS TOWER ★  
134.8 (CTAF)  
CHICAGO DEP CON  
119.35 354.075

**TOP ALTITUDE:  
3000**



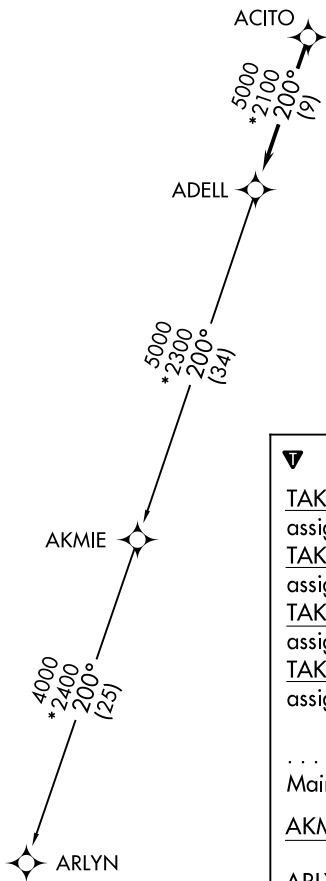
**TAKEOFF MINIMUMS:**

- Rwy 2: Standard with minimum climb of 420' per NM to 2700.
- Rwy 9: Standard with minimum climb of 310' per NM to 2700.
- Rwy 20: Standard with minimum climb of 370' per NM to 2700.
- Rwy 27: Standard with minimum climb of 340' per NM to 2700.

- NOTE: RADAR required.
- NOTE: DME/DME/IRU or GPS required.
- NOTE: RNAV 1.
- NOTE: Turbojet departures maintain 250K until advised by ATC.
- NOTE: AKMIE Transition: For aircraft inbound to BMI, SPI, PIA, or as assigned by ATC.

EC-3, 13 JUN 2024 to 11 JUL 2024

EC-3, 13 JUN 2024 to 11 JUL 2024



NOTE: Chart not to scale.



### DEPARTURE ROUTE DESCRIPTION

- TAKEOFF RUNWAY 2: Climb heading 015° to 1180, then as assigned by ATC, for vectors to ACITO. Thence. . .
- TAKEOFF RUNWAY 9: Climb heading 089° to 1180, then as assigned by ATC, for vectors to ACITO. Thence. . .
- TAKEOFF RUNWAY 20: Climb heading 195° to 1180, then as assigned by ATC, for vectors to ACITO. Thence. . .
- TAKEOFF RUNWAY 27: Climb heading 269° to 1180, then as assigned by ATC, for vectors to ACITO. Thence. . .

. . . . on track 200° to ADELL, then on (transition).  
Maintain 3000. Expect filed altitude 10 minutes after departure.

AKMIE TRANSITION (ADELL6.AKMIE):

ARLYN TRANSITION (ADELL6.ARLYN):