

(BLOKR6.BLOKR) 22363

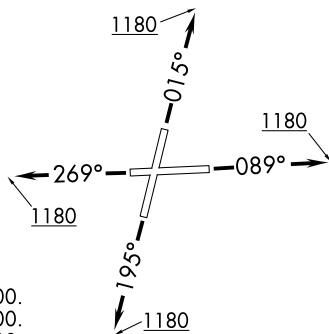
AL-6063 (FAA)

BLOKR SIX DEPARTURE (RNAV)

LEWIS UNIVERSITY (L.O.T)
CHICAGO/ROMEOVILLE, ILLINOIS

D-ATIS
126.675
GND CON
120.425
LEWIS TOWER ★
134.8 (CTAF)
CHICAGO DEP CON
119.35 354.075

**TOP ALTITUDE:
3000**



TAKEOFF MINIMUMS:

- Rwy 2: Standard with minimum climb of 420' per NM to 2700.
- Rwy 9: Standard with minimum climb of 310' per NM to 2700.
- Rwy 20: Standard with minimum climb of 370' per NM to 2700.
- Rwy 27: Standard with minimum climb of 340' per NM to 2700.

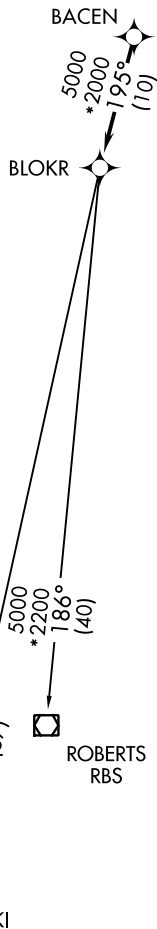
NOTE: RADAR required.

NOTE: DME/DME/IRU or GPS required.

NOTE: RNAV 1.

NOTE: Turbojet departures maintain 250K until advised by ATC.

NOTE: ROBERTS TRANSITION: For aircraft inbound to CMI or STL, or as assigned by ATC.



DEPARTURE ROUTE DESCRIPTION

TAKEOFF RUNWAY 2: Climb heading 015° to 1180, then as assigned by ATC, for vectors to BACEN. . . .

TAKEOFF RUNWAY 9: Climb heading 089° to 1180, then as assigned by ATC, for vectors to BACEN. Thence. . . .

TAKEOFF RUNWAY 20: Climb heading 195° to 1180, then as assigned by ATC, for vectors to BACEN. Thence. . . .

TAKEOFF RUNWAY 27: Climb heading 269° to 1180, then as assigned by ATC, for vectors to BACEN. Thence. . . .

. . . .on track 195° to BLOKR, then on (transition).
Maintain 3000. Expect filed altitude 10 minutes after departure.

BEKKI TRANSITION (BLOKR6.BEKKI):
ROBERTS TRANSITION (BLOKR6.RBS):

NOTE: Chart not to scale.

EC-3, 13 JUN 2024 to 11 JUL 2024

EC-3, 13 JUN 2024 to 11 JUL 2024

BLOKR SIX DEPARTURE (RNAV)
(BLOKR6.BLOKR) 10OCT19

CHICAGO/ROMEOVILLE, ILLINOIS
LEWIS UNIVERSITY (L.O.T)