

(BLTWY7.BLTWY) 21280

AL-6073 (FAA)

CLEVELAND MUNI (6R3)
CLEVELAND, TEXAS

BLTWY SEVEN DEPARTURE (RNAV)

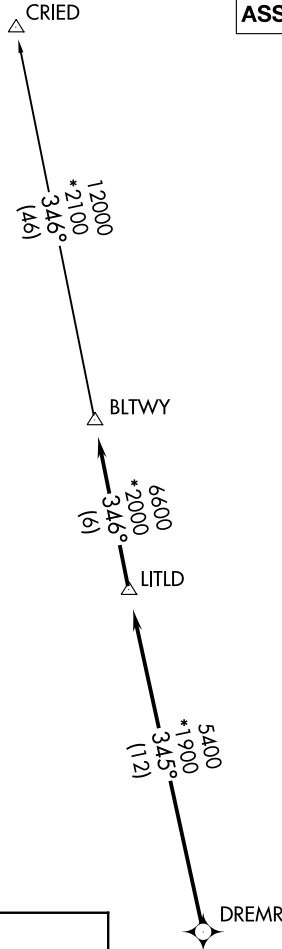
AWOS-3
119.325
CTAF
123.0
HOUSTON DEP CON
119.7 281.4

**TOP ALTITUDE:
ASSIGNED BY ATC**

NOTE: RADAR required.
NOTE: DME/DME/IRU or GPS required.
NOTE: RNAV 1.

TAKEOFF MINIMUMS

Rwy 16, 34: Standard with minimum climb
of 500' per NM to 660.



SC-5, 13 JUN 2024 to 11 JUL 2024

SC-5, 13 JUN 2024 to 11 JUL 2024

DEPARTURE ROUTE DESCRIPTION

TAKEOFF RUNWAY 16: Climb on heading 157° to 1400 for RADAR vectors to DREMR, thence

TAKEOFF RUNWAY 34: Climb on heading 312° to 2000 for RADAR vectors to DREMR, thence

...on track 345° to LITLD, then on track 346° to BLTWY, then on (transition). Maintain ATC assigned altitude. Expect filed altitude 10 minutes after departure.

CRIED TRANSITION (BLTWY7.CRIED)

NOTE: Chart not to scale.

BLTWY SEVEN DEPARTURE (RNAV)

(BLTWY7.BLTWY) 07OCT21

CLEVELAND, TEXAS
CLEVELAND MUNI (6R3)