

WAAS CH 65724 W16A	APP CRS 157°	Rwy Idg TDZE 150 Apt Elev 150	5001
--	------------------------	---	-------------

RNAV (GPS) RWY 16

CLEVELAND MUNI (6R:3)

RNP APCH.

▽ Circling to Rwy 34 NA at night. Rwy 16 helicopter visibility reduction below 3/4 SM NA. For uncompensated Baro-VNAV systems, LNAV/VNAV NA below -1.5°C or above 54°C.

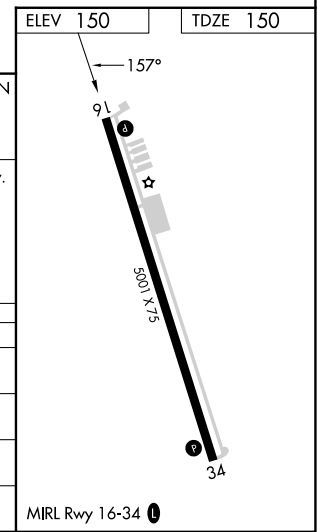
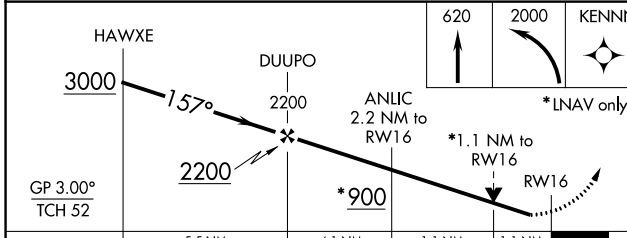
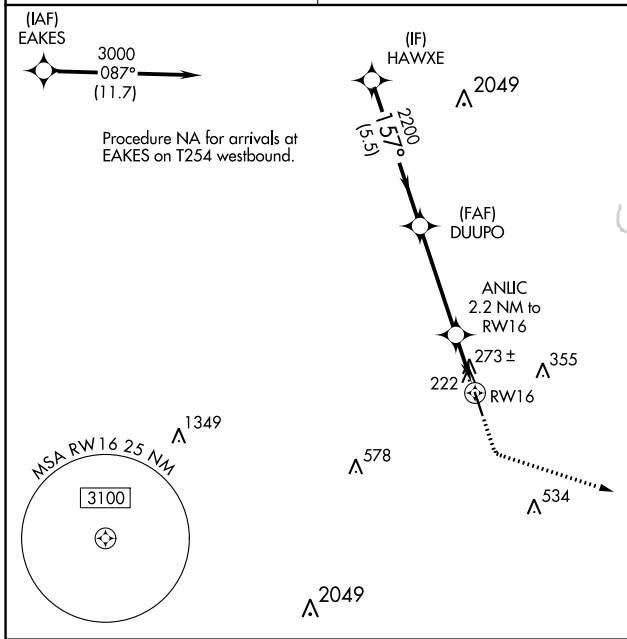
▲

MISSED APPROACH: Climb to 620 then climbing left turn to 2000 direct KENNN and hold.

AWOS-3
119.325

HOUSTON APP CON
119.7 281.4

UNICOM
123.0 (CTAF) 0



CATEGORY	A	B	C	D
LPV DA	400-1	250 (300-1)		NA
LNAV/VNAV DA	433-1	283 (300-1)		NA
LNAV MDA	540-1	390 (400-1)	540-1 1/8 390 (400-1 1/8)	NA
CIRCLING	600-1	450 (500-1)	660-1 1/2 510 (600-1 1/2)	NA

SC-5, 13 JUN 2024 to 11 JUL 2024

SC-5, 13 JUN 2024 to 11 JUL 2024