

WAAS CH 50441 W02A	APP CRS 017°	Rwy Idg TDZE Apt Elev	5218 3256 3265
--	------------------------	-----------------------------	---

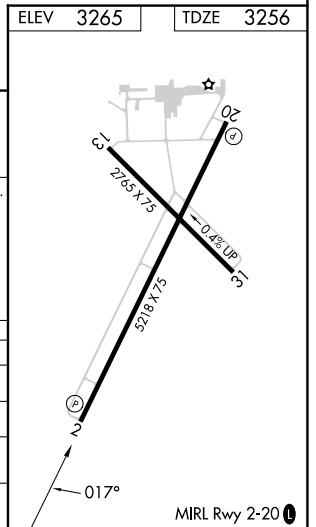
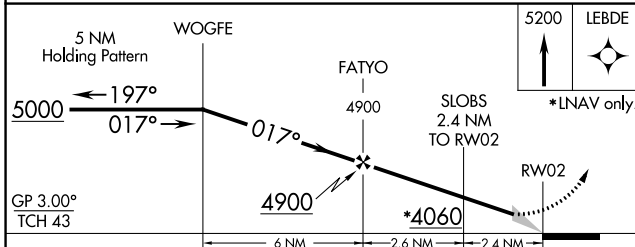
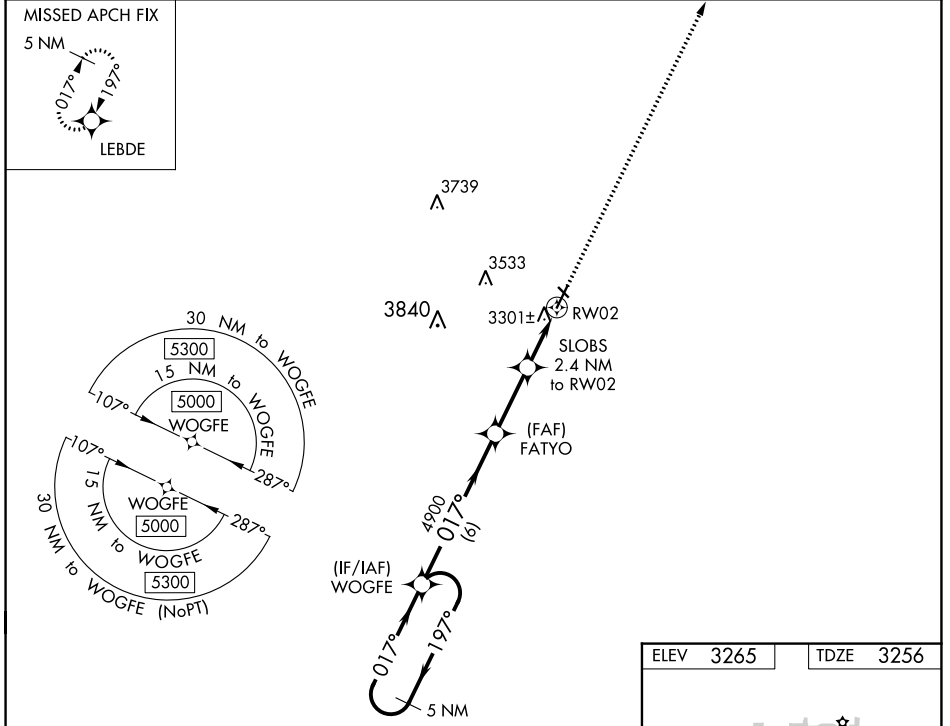
RNAV (GPS) RWY 2

TERRY COUNTY (BFE)

Baro-VNAV NA. Circling Rwy 13, 31 NA at night. DME/DME RNP-0.3 NA. Use Lubbock altimeter setting. When not received, use Seminole altimeter setting and increase LPV DA to 3600; increase LNAV/VNAV DA to 3600; and increase all MDA 20 feet.

MISSED APPROACH: Climb to 5200 direct LEBDE and hold.

LBB ASOS 125.3 270.275	LUBBOCK APP CON 119.2 351.8	UNICOM 122.8 (CTAF) 0
----------------------------------	---------------------------------------	---------------------------------



CATEGORY	A	B	C	D
LPV DA		3589-1	333 (400-1)	
LNAV/VNAV DA		3589-1	333 (400-1)	
LNAV MDA	3640-1	384 (400-1)	3640-1 1/8	384 (400-1 1/8)
CIRCLING	3760-1 495 (500-1)	3920-1 655 (700-1)	3980-2 715 (800-2)	4100-2 3/4 835 (900-2 3/4)