

VOR/DME MOD 114.6 Chan 93	APP CRS 027°	Rwy Idg TDZE Apt Elev	N/A N/A 237
---	------------------------	-----------------------------	--

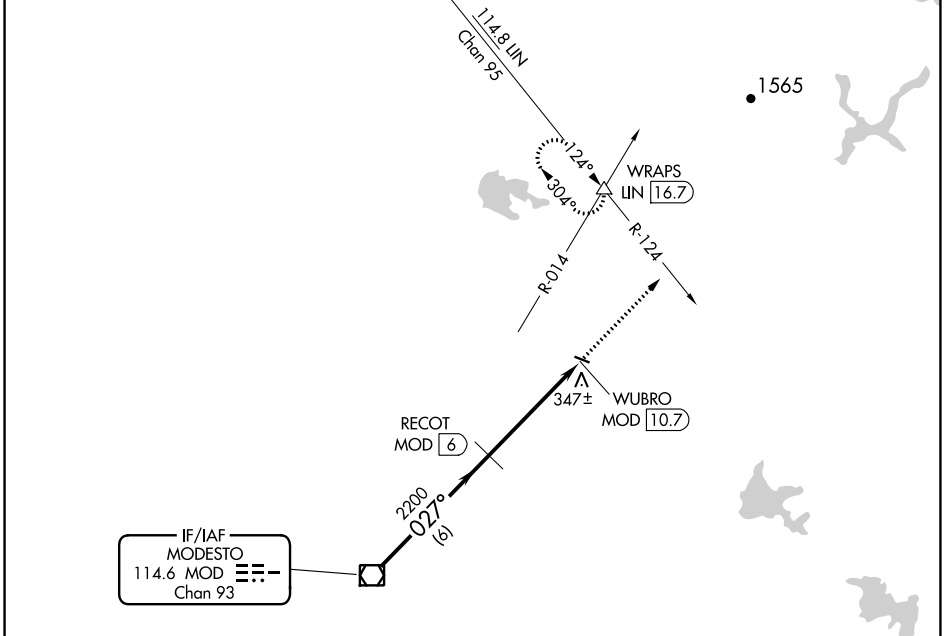
VOR-A

OAKDALE (O27)

▼ DME required.
▲NA Use Modesto altimeter setting, when not received, use Stockton altimeter setting and increase all MDA 40 feet.

MISSED APPROACH: Climb to 3000 on heading 027° and LIN R-124 to WRAPS INT/LIN 16.7 DME and hold, continue climb-in-hold to 3000.

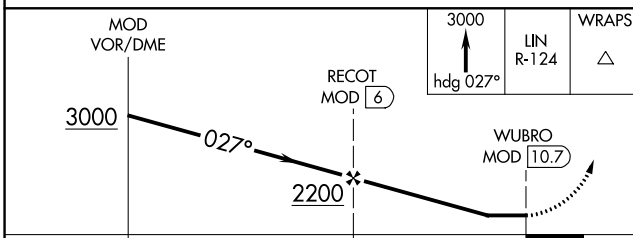
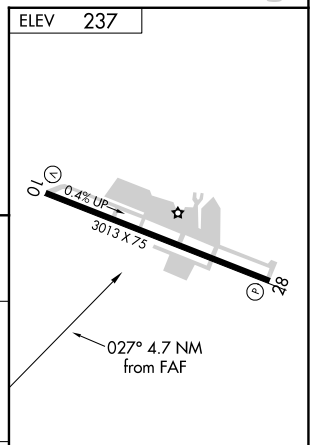
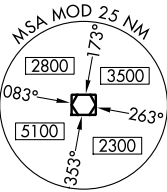
MOD ASOS 127.7	NORCAL APP CON 125.1 363.2	UNICOM 122.8 (CTAF) 0
--------------------------	--------------------------------------	---------------------------------



SW-2, 13 JUN 2024 to 11 JUL 2024

SW-2, 13 JUN 2024 to 11 JUL 2024

IF/IAF
 MODESTO
 114.6 MOD Chan 93



CATEGORY	A	B	C	D
C CIRCLING	820-1	583 (600-1)	920-2 683 (700-2)	NA

REIL Rwys 10 and 28
 MRL Rwy 10-28 **0**