

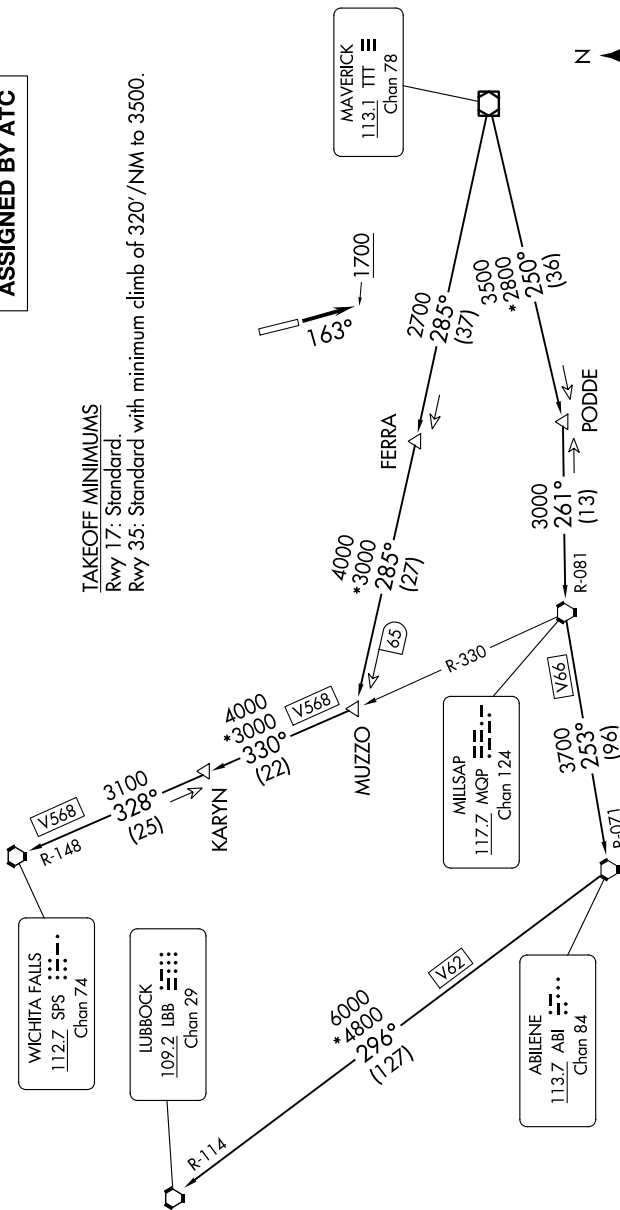
KINGDOM FOUR DEPARTURE

REGIONAL DEP CON
118.1 306.95
CTAF
122.8

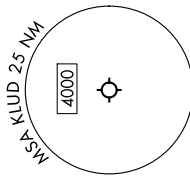
**TOP ALTITUDE:
ASSIGNED BY ATC**

TAKEOFF MINIMUMS
Rwy 17: Standard.
Rwy 35: Standard with minimum climb of 320'/NM to 3500.

RADAR and DME required.



- NOTE: LUBBOCK Transition: For all aircraft overlying the MQP VORTAC westbound or direct.
- NOTE: MILLSAP Transition: For all aircraft overlying the MQP VORTAC westbound or direct.
- NOTE: PODDE Transition: ATC assigned.
- NOTE: WICHITA FALLS Transition: For all aircraft landing within the Wichita Falls terminal area or overlying the SPS VORTAC.
- NOTE: For all aircraft requesting 17000 and below.



(CONTINUED ON FOLLOWING PAGE)

NOTE: Chart not to scale.

SC-2, 13 JUN 2024 to 11 JUL 2024

SC-2, 13 JUN 2024 to 11 JUL 2024

KINGDOM FOUR DEPARTURE