

APP CRS	Rwy Idg	4206
282°	TDZE	665
	Apt Elev	665

RNAV (GPS) RWY 28

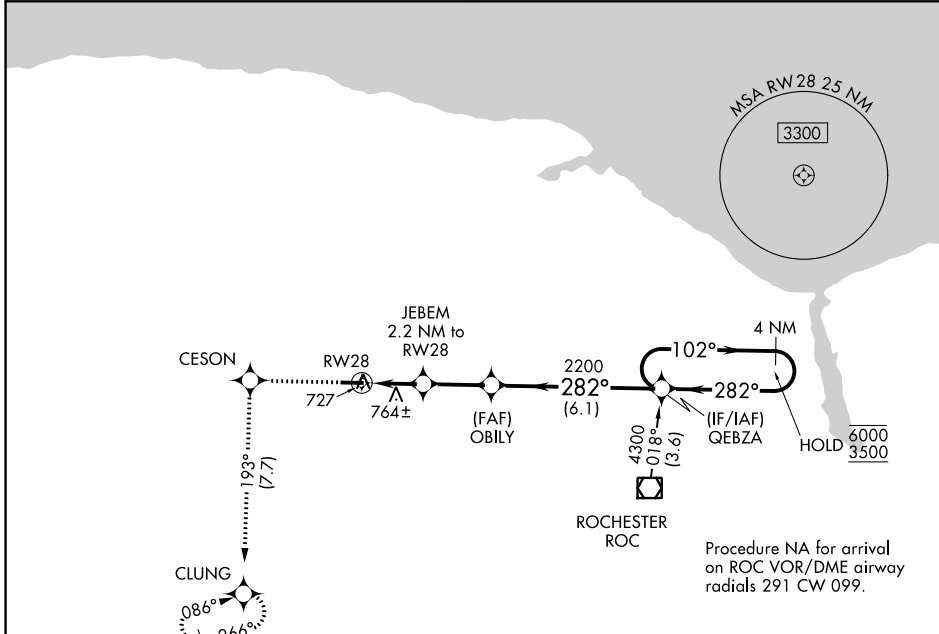
LEDGEDALE AIRPARK (7G0)

RNP APCH.
 ▼ Rwy 28 helicopter visibility reduction below 1 SM NA.
 ▲ NA Procedure NA at night.

MISSED APPROACH: Climb to 3500 direct CESON and on track 193° to CLUNG and hold, continue climb-in-hold to 3500.

ROCHESTER APP CON
123.7 322.3

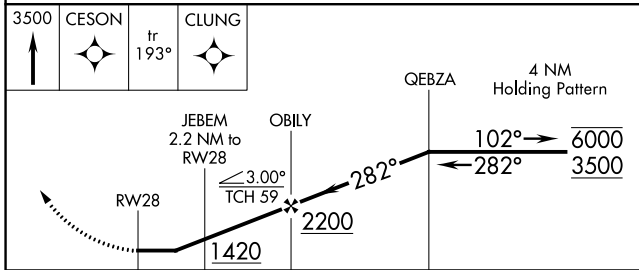
UNICOM
122.7 (CTAF)



NE-2, 13 JUN 2024 to 11 JUL 2024

NE-2, 13 JUN 2024 to 11 JUL 2024

ELEV	665	TDZE	665
------	-----	------	-----



CATEGORY	A	B	C	D
LNVA MDA	1060-1	395 (400-1)		NA
CIRCLING	1160-1	495 (500-1)		NA

