

# BORRN SIX DEPARTURE (RNAV)

**TOP ALTITUDE:  
ASSIGNED BY ATC**

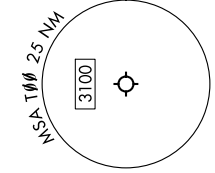
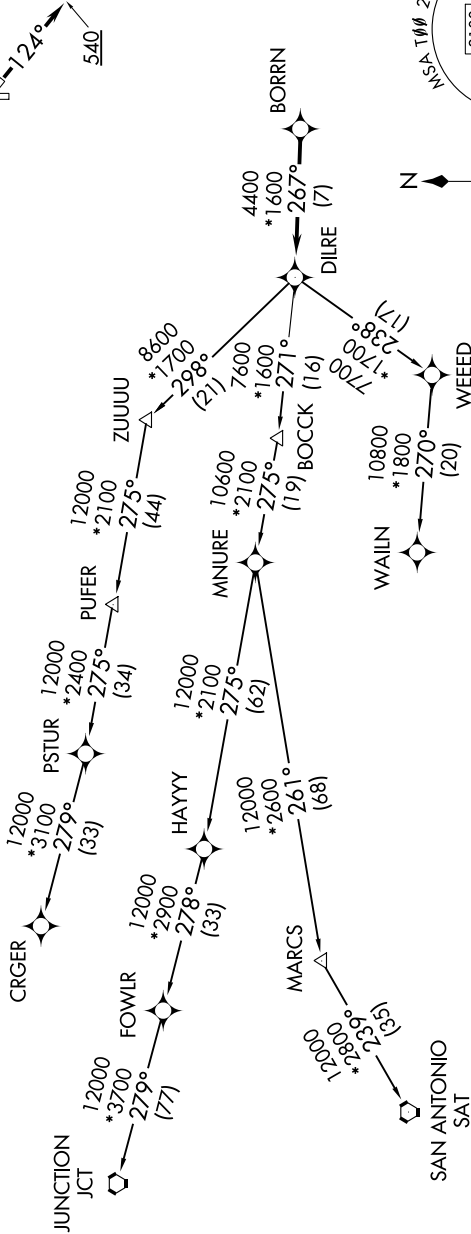
RNAV 1 - DME/DME/IRU or GPS.

RADAR required.

### TAKEOFF MINIMUMS

Rwys 17, 35: NA - Environmental.  
Rwys 12, 30: Standard with minimum climb of 500'/NM to 540.

CTAF  
122.9  
HOUSTON DEP CON  
134.45 284.0



NOTE: Chart not to scale.

NOTE: CRGR-TRANSITION ATC assigned only for aircraft departing 54T, AXH, EFD, GLS, HPY, IWS, LBX, LVJ, SGR, TME, T00, T41.

(NARRATIVE ON FOLLOWING PAGE)

# BORRN SIX DEPARTURE (RNAV)