

# KARR SEVEN DEPARTURE (RNAV)

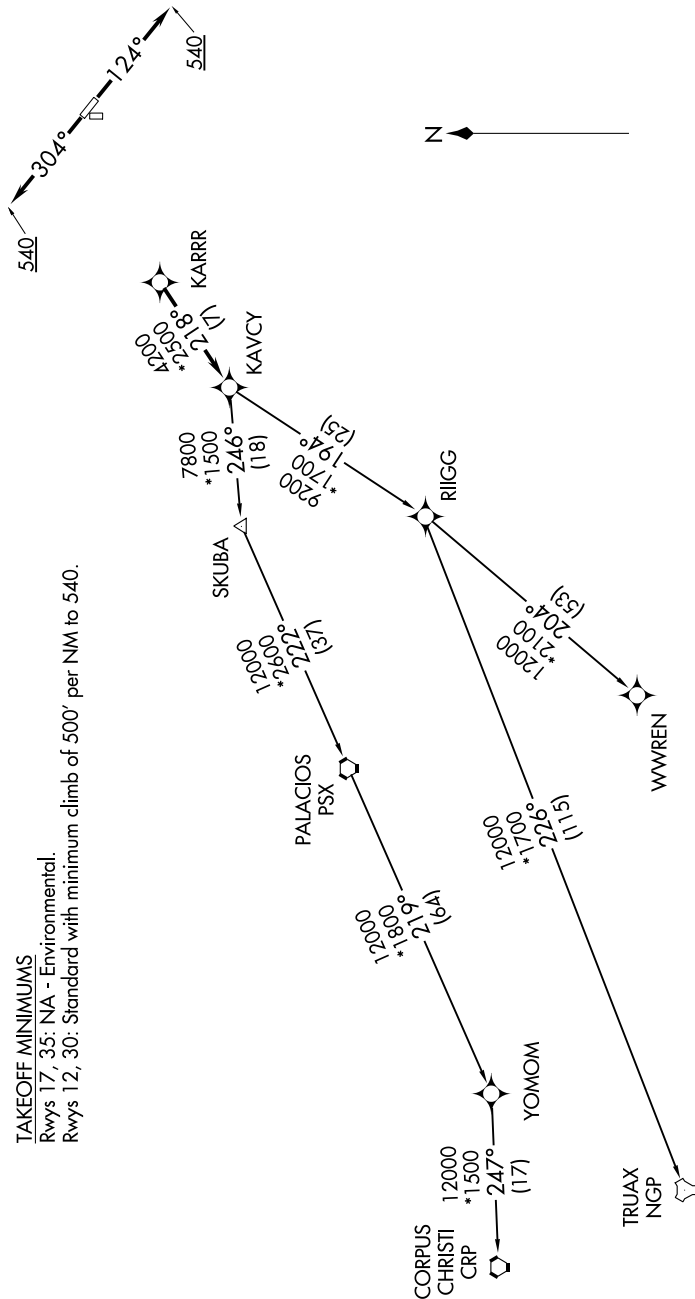
**TOP ALTITUDE:  
ASSIGNED BY ATC**

RNAV-1 DME/DME/IRU or GPS.  
RADAR required.

CTAF  
122.9  
HOUSTON DEP CON  
134.45 284.0

**TAKEOFF MINIMUMS**

Rwys 17, 35: NA - Environmental.  
Rwys 12, 30: Standard with minimum climb of 500' per NM to 540.



(NARRATIVE ON FOLLOWING PAGE)

NOTE: Chart not to scale.

# KARR SEVEN DEPARTURE (RNAV)