

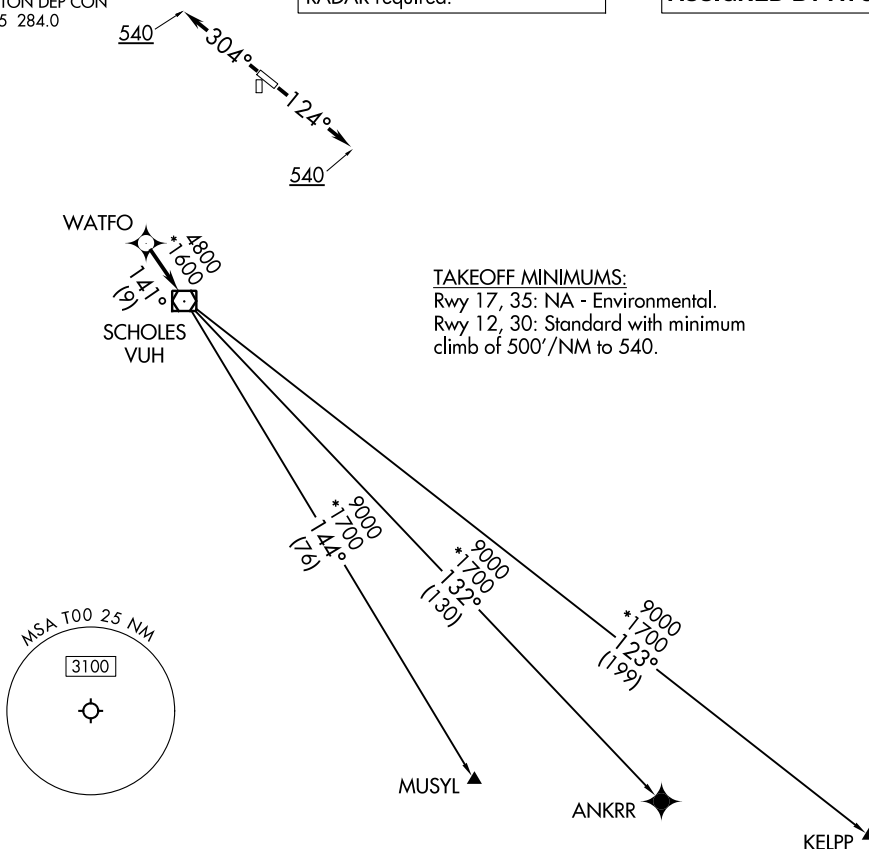
WATFO SIX DEPARTURE (RNAV)

CTAF
122.9
HOUSTON DEP CON
134.45 284.0

RNAV 1 - DME/DME/IRU or GPS.

RADAR required.

**TOP ALTITUDE:
ASSIGNED BY ATC**



TAKEOFF MINIMUMS:
Rwy 17, 35: NA - Environmental.
Rwy 12, 30: Standard with minimum
climb of 500' /NM to 540.

NOTE: Chart not to scale.



DEPARTURE ROUTE DESCRIPTION

TAKEOFF RUNWAY 12: Climb on heading 124° to 540, for RADAR vectors to WATFO, thence. . . .

TAKEOFF RUNWAY 30: Climb on heading 304° to 540, for RADAR vectors to WATFO, thence. . . .

. . . .on track 141° to VUH VOR/DME, then on (transition). Maintain ATC assigned altitude. Expect filed altitude 10 minutes after departure.

ANKRR TRANSITION (WATFO6.ANKRR)

KELPP TRANSITION (WATFO6.KELPP)

MUSYL TRANSITION (WATFO6.MUSYL)