

WAAS CH 56429 W14A	APP CRS 135°	Rwy Idg TDZE Apt Elev	5006 678 678
--	------------------------	-----------------------------	---

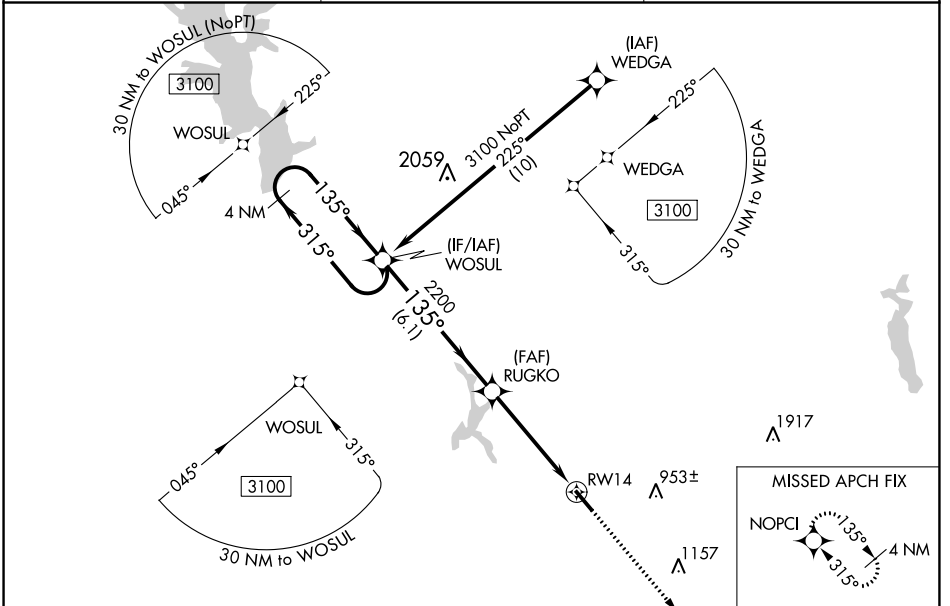
RNAV (GPS) RWY 14

CHEROKEE COUNTY (JSO)

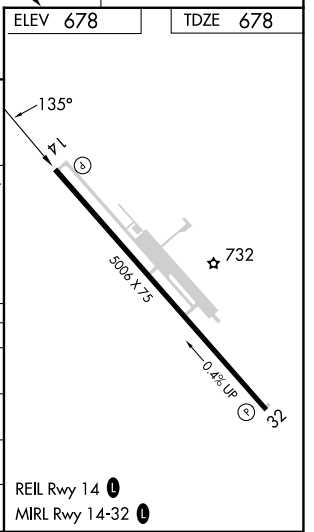
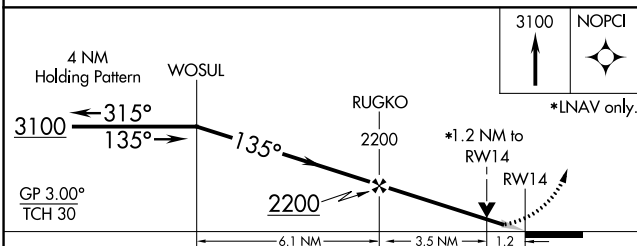
▼ Baro-VNAV NA when using Nacogdoches altimeter setting. For uncompensated Baro-VNAV systems, LNAV/VNAV NA below -16°C (4°F) or above 54°C (130°F). When local altimeter setting not received, use Nacogdoches altimeter setting and increase all DA to 1046 feet and increase LPV visibility 1/8 SM and LNAV/VNAV visibility 1/4 SM; increase all MDA 120 feet and LNAV visibility Cat C 3/8 SM, Circling visibility Cat C 1/4 SM. DME/DME RNP-0.3 NA. VDP NA with Nacogdoches altimeter setting.

▲ MISSED APPROACH: Climb to 3100 direct NOPCI and hold.

AWOS-3 119.075	LONGVIEW APP CON * 128.75 379.15	UNICOM 122.7 (CTAF) 0
--------------------------	--	---------------------------------



ELEV 678	TDZE 678
----------	----------



CATEGORY	A	B	C	D
LPV DA	928-1	250 (300-1)		NA
LNAV/VNAV DA	928-1	250 (300-1)		NA
LNAV MDA	1080-1	402 (500-1)	1080-1 1/8 402 (500-1 1/8)	NA
CIRCLING	1080-1 402 (500-1)	1140-1 462 (500-1)	1280-1 3/4 602 (700-1 3/4)	NA

SC-5, 13 JUN 2024 to 11 JUL 2024

SC-5, 13 JUN 2024 to 11 JUL 2024